

Upto 75%
Made in India Parts

**PCB
Drill / Route
CNC Machine**



40,000 RPM



High Speed Spindle

Spindles from Indus Spindles, India rated for high speed operations - Process PCB Boards all day long.



Innovative Materials

World's first Composite Superstructure CNC with Lifetime Warranty on the material. No Sagging, hogging, rust or corrosion



Manual Tool Change

High Speed, manual tool change spindle allows you to run batch operations and reduced your overall cost of ownership

**Call / WhatsApp /
Telegram**

+91 90190 54837



Our Location

Bangalore,
Karnataka
India



Technical Specifications

| | |
|--|--|
| Machine Type | 3 Axis |
| Working Area X x Y | 400 x 300 MM |
| Z Axis Travel | 100 MM (Customizable) |
| Footprint - Machine | 750 x 750 MM |
| Footprint - Control Box | 610 x 450 MM |
| Chassis | Carbon Fiber / Fiber Glass Superstructure - Mounted on Mild Steel Base - Open Type |
| Controller Type | Arduino Controller - Machine can be operated through a USB connection with any Windows Laptop/Desktop with Windows 10 or 11. PC Optimization Settings and the following Open source Software will be provided as links to download and install. 1 - Converts Excellon & Gerber to GCODE. 2 - Runs the machine as per the GCODE |
| Max Travel Speed (X, Y & Z) | 5 Meters / Minute |
| Spindle - Country of Origin | India |
| Spindle - Power | 1 KW |
| Spindle - MAX RPM | 40,000 |
| Spindle - Tool Change type | MTC - Manual Tool Change |
| Spindle - Collet | ER11 |
| Spindle Maximum Run-out (Certified) | <20 Microns |
| Spindle Type | Water Cooled - Chiller and Recirculation system |
| Dill Holes Per Minute - Stepper | Between 30-40 - Depends on Spindle retract height & Movement between each hole. |
| Dill Holes Per Minute - Servo - Upgrade Required | Between 80-100 - Depends on spindle retract height and movement between each hole. |
| Applications | High power PCB, Analog PCB, Digital PCB |
| Drive - All Axis | Hiwin/THK/Other Rolled Ball Screw - 16 MM |
| Guides - All Axis | Hiwin/THK/Other 20 MM Linear Guide & Block |

| | |
|---------------------------------------|--|
| Drive Motors | NEMA 34 - Stepper Motor (Made in Japan) |
| Certified Repeat Positioning Accuracy | <50 Microns |
| Tested Repeat Positioning Accuracy | Between 15-25 Microns / 0.015 to 0.025 MM |
| Spindle Control | Automatic VFD Control through GCODE/MCODE |
| Stock / Material Fixturing Support | Aluminium Extruded T Slot Stock Mounting Profiles |
| Movement | Simultaneous 3 Axis Motion – Full Interpolation |
| Machine Movement Type | Moving Bed / Fixed Gantry System |
| Ship Configuration | Ships Fully Assembled with selected accessories |
| Warranty | 1 Year Warranty – All Parts Covered |
| Extended Warranty | Optional - Up to 10 Additional Years. Available in increments of 1/2/3/4/5 Years |
| Maintenance Contracts | Optional - Up to 10 Additional Years. Available in increments of 1/2/3/4/5 Years |
| Superstructure Warranty | Lifetime Warranty on all composite parts installed on the machines. Warranty applicable under normal operating conditions. |
| Certification | ISO 9001 & CE Certified |
| CAM Support | Fully compliant with GCODE / MCODE (GRBL) - Solidworks, Catia, Fusion etc. |
| Tool Sensor | Non-Touch Bit Height Adjustment Sensor |
| Materials Supported | PCB (all types) |
| Calibrated By | All of our measurements are made with Mitutoyo calibrated instruments |
| Power Input | Single Phase Input – 220V / 110V |
| Current Requirement | 16 Amp Plug Point Required |

| | |
|----------------------------|--|
| Bellow Implementation | Optional |
| Minimum Track Width | 0.100 MM |
| Number of Layers Supported | Single / Dual Layer PCB |
| File Formats Supported | Excellon / GERBER / GCODE |
| Control PC | Optional - Laptop or Desktop with Monitor, Keyboard & Mouse - Original Windows 10/11 |
| Software Provided | FlatCAM (Convert Excellon/Gerber to GCODE) & Gsender/UGS (Machine Control) |
| Spindle Cooling System | Water Cooled Spindle with Chiller and Recirculation System |
| Top Cover / Enclosure | Optional |

ZERO Chinese Parts



PCBMaker 4030 40K
3 AXIS PCB CNC

Highlights



HIWIN / THK
16MM BALL SCREW
20 MM LINEAR GUIDES

X & Y AXES
NEMA 24 STEPPERS
MADE IN INDIA

40,000 RPM SPINDLE
INDUS SPINDLES,
INDIA

SINGLE PHASE INPUT
REQUIRED



MACHINE CONTROL
BOX

CONTACTLESS
TOOL HEIGHT
SENSOR

EXTRUDED
ALUMINIUM
TSLOT PROFILES

ALL MADE IN INDIA
COMPONENTS - DRIVERS, POWER
SUPPLY, VFD, SWITCHES, FAN,
ETC.

PIONEERING COMPOSITE
SUPERSTRUCTURE WITH
LIFETIME WARRANTY

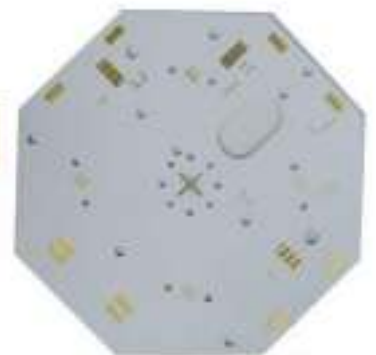
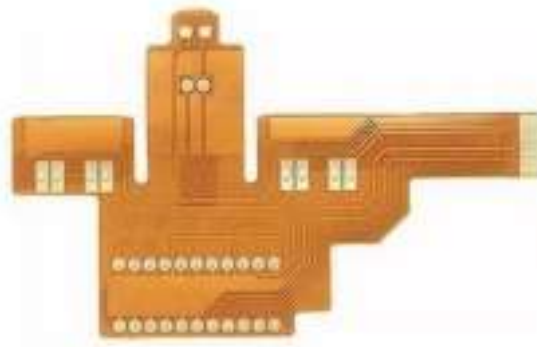
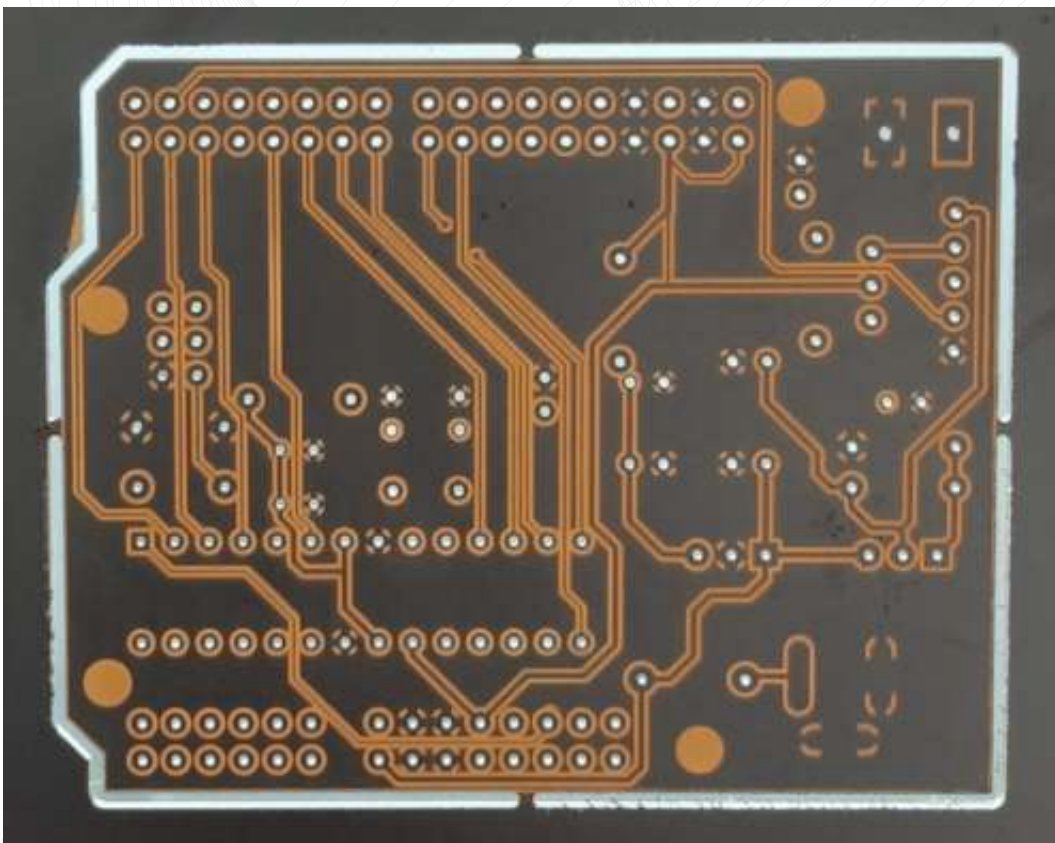
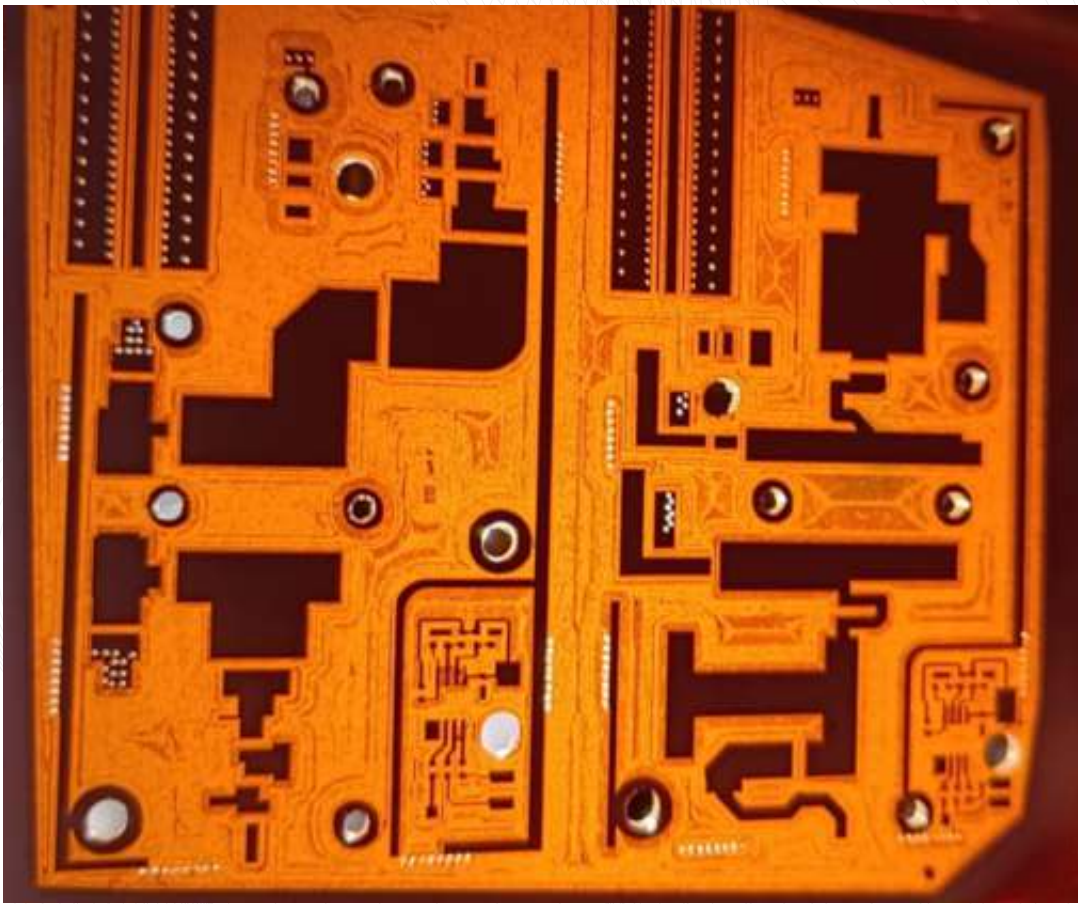
USE YOUR LAPTOP/PC

REQUIRES A USB 2.0 PORT &
OPEN SOURCE SOFTWARES

OTHER CONTROLLERS ALSO AVAILABLE

BUILT ON A TATA STEEL
MILD STEEL BED.
INCLUDES A CHILLER FOR
SPINDLE COOLING

OTHER CONTROLLER OPTIONS ALSO AVAILABLE



ACCESSORIES INCLUDED WITH THE MACHINE

Cutting Bits

PCB Drilling Bits - Collection

- Drill Dia 0.3MM to 1.2 MM
- Shaft Dia - 3.175 MM

PCB Engraving Bits - 2 Pcs

- 0.1 MM Tip
- Shaft Dia - 4 MM
- Angle - 30 Degrees

Endmill - Routing Operations

- 1 x 2 MM Dia Flat End Corn EndMill

Collets for Spindle

ER 16 Collet (Based on Spindle) - 3 PCS

---3MM Dia

---4MM Dia

---6MM Dia

Others

-- T Nuts (For Securing the Material) - 10 Pcs

-- Spanner Compatible with spindle Nut

-- Connector Cable - 1 Piece

-- Stock Mounting Bolts & Nuts - 8 Pcs

-- Composite Stock Holders - 4 Pcs

- Machine is shipped fully built in a plug & play condition
- Installation is not required - If requested additional costs will apply
- If shipped with a control pc, it is shipped fully configured in plug & play condition

SERVOS

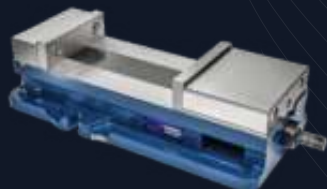


Made in USA | Comprehensive 3 Years Warranty

ENCLOSURES



CLAMPING



**OPTIONS,
UPGRADES &
ACCESSORIES**

OTHER ACCESSORIES



Probes

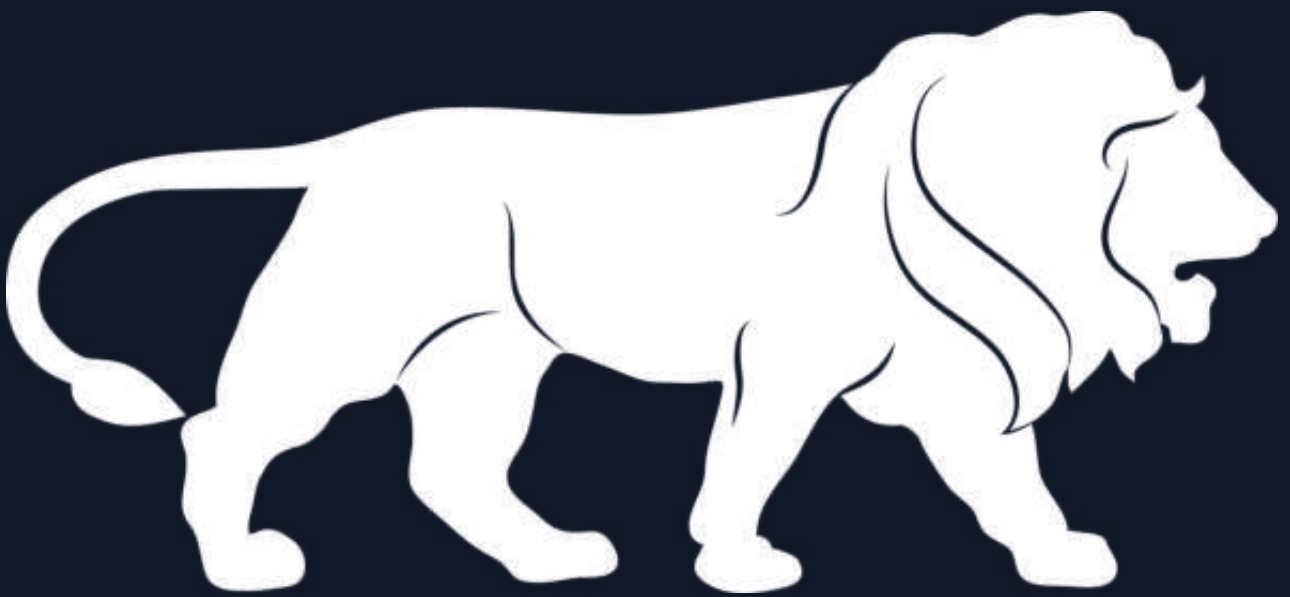


Flood Cooling



Bellows

PROUDLY
MADE IN INDIA



ENGINEER BEAUTIFUL