

Up to 75 %
Made in India Parts



Manufacturing / Tool Rooms



High Speed Spindle

Spindles from Teknomotor, Italy rated for Continuous Operations - Suitable for soft materials like plastics, acrylic, wood, mdf etc.



Innovative Materials

World's first Composite Superstructure CNC with Lifetime Warranty on the material. No Sagging, hogging, rust or corrosion



Rated for 24/7 Ops

Run long operations with confidence. High quality Spindles, Steppers and Electronics enable high productivity.

Call / WhatsApp /
Telegram

+91 90190 54837



Our Location

Bangalore,
Karnataka
India



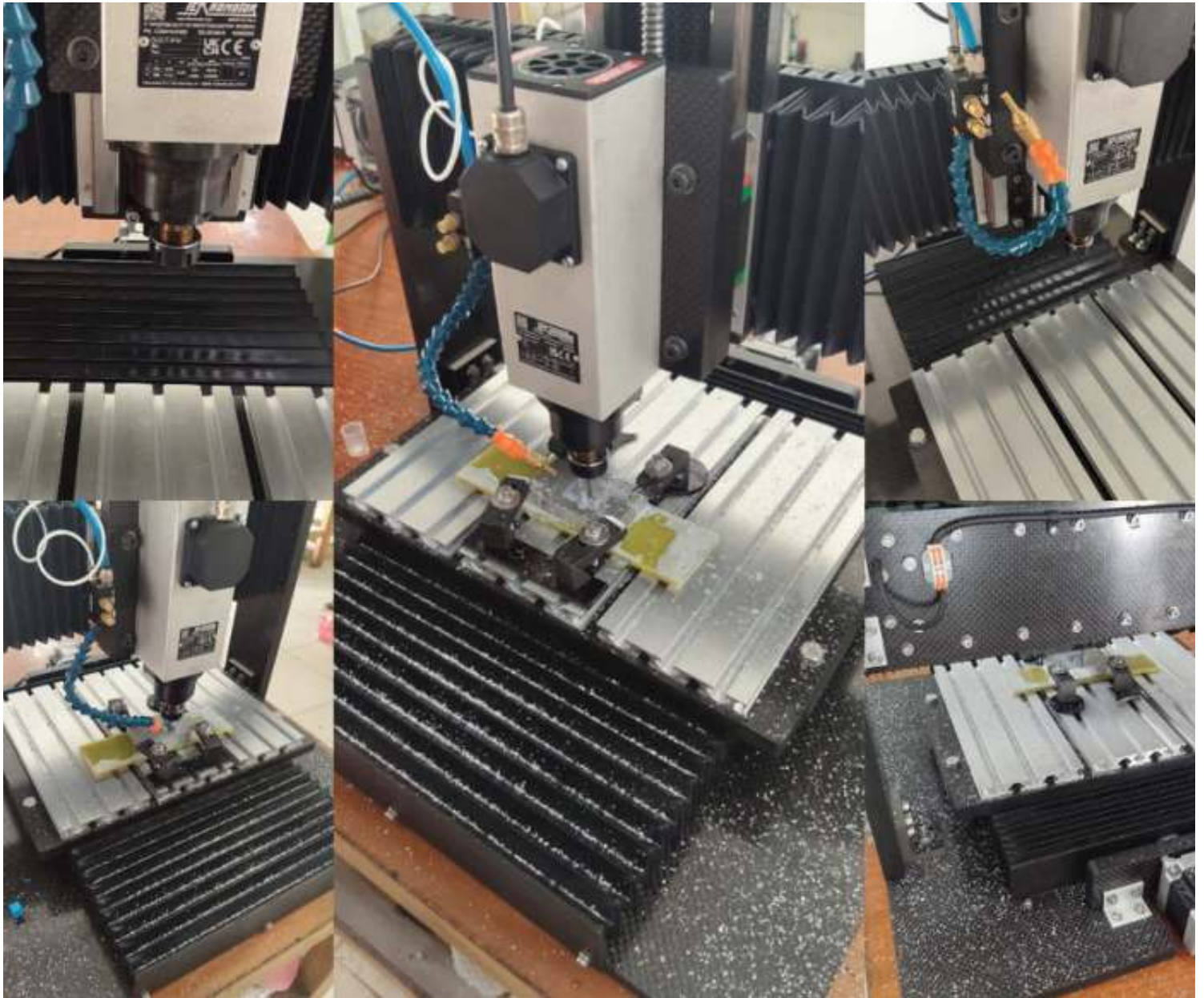
Technical Specifications

| | |
|---------------------------------------|---|
| Machine Type | 3 Axis |
| Working Area X x Y | 500 x 400 MM |
| Z Axis Travel | 100 MM (Customizable) |
| Footprint - Machine | 850 x 850 MM |
| Footprint - Control Box | 610 x 450 MM |
| Chassis | Carbon Fiber / Fiber Glass Superstructure - Desktop/Tabletop |
| Controller Type | <p>LinuxCNC Desktop PC based Controller</p> <ul style="list-style-type: none"> • All pc's ship with a Full HD monitor, Keyboard & Mouse • Spindle Speed Control & Automatic Mist Cooling on/off through Gcode <p>Other Non-PC Controller Options Available</p> |
| Max Travel Speed (X, Y & Z) | 5 Meters / Minute |
| Spindle - Country of Origin | Teknomotor, Italy |
| Spindle - Power | 2.2 KW / 3 HP |
| Spindle - MAX RPM | 24,000 |
| Spindle - Tool Change type | MTC - Manual Tool Change |
| Spindle - Collet | ER20 |
| Spindle Maximum Run-out (Certified) | <20 Microns |
| Spindle Maximum Run-out (Tested) | <10 Microns |
| Drive - All Axis | Hiwin/THK/Other Rolled Ball Screw - 20 MM |
| Guides - All Axis | Hiwin/THK/Other 25 MM Linear Guide & Block |
| Drive Motors | NEMA 34 - Stepper Motor (Made in India) |
| Certified Repeat Positioning Accuracy | <50 Microns |
| Tested Repeat Positioning Accuracy | Between 15-25 Microns / 0.015 to 0.025 MM |

| | |
|------------------------------------|--|
| Spindle Control | Automatic VFD Control through GCODE/MCODE |
| Stock / Material Fixturing Support | Aluminium Extruded T Slot Stock Mounting Profiles |
| Movement | Simultaneous 3 Axis Motion – Full Interpolation |
| Machine Movement Type | Moving Bed / Fixed Gantry System |
| Ship Configuration | Ships Fully Assembled with selected accessories |
| Continuous Operations Capable | Yes, Certified for 24/7 Operations |
| Warranty | 1 Year Warranty – All Parts Covered |
| Extended Warranty | Optional - Up to 10 Additional Years. Available in increments of 1/2/3/4/5 Years |
| Annual Maintenance Contracts (AMC) | Optional - Up to 10 Additional Years. Available in increments of 1/2/3/4/5 Years |
| Superstructure Warranty | Lifetime Warranty on all composite parts installed on the machines. Warranty applicable under normal operating conditions. |
| Certification | ISO 9001 & CE Certified |
| CAM Support | Fully compliant with GCODE / MCODE (GRBL) - Solidworks, Catia, Fusion etc. |
| Tool Sensor | Z-Axis Touch / Non-Touch Sensor - Optional for Purchase |
| Materials Supported | EN Steel - Untreated, Aluminium, Copper, Brass, Bronze, Zinc, Magnesium, Lead, Gold, Silver, Platinum, Plastics, Copper-Tungsten, Epoxy, Graphite, ABS, Polycarbonate, Acrylic, Composites, carbon fiber, fiber glass, aramid, fibre Glass, Carbon Fibre, Wood, MDF, PCB |
| Calibrated By | All of our measurements are made with Mitutoyo calibrated instruments |
| Diode Laser Compatibility | Yes - With Arduino Controller option Only |
| Power Input | Single Phase Input – 220V / 110V |
| Current Requirement | 16 Amp Plug Point Required |
| Bellow Implementation | Installed on X & Y- Reduces Working Area by 12-15% |
| Fully Transparent Enclosure | Optional |

| | |
|----------------------|--|
| Machine Code Support | Fully Compliant with GCODE / MCODE |
| Control PC | Desktop with Monitor, Keyboard & Mouse - LinuxCNC Preinstalled |
| Software Provided | Gsender/UGS (Machine Control) |
| Cooling System | Air Cooled Spindle. Mist Cooling with Flex Pipe Installed with an integrated solenoid valve controlled with the CNC Controller through GCODE |

ZERO Chinese Parts



Meteor 5040 HD
3 AXIS CNC

Highlights



HIWIN / THK
20MM BALL SCREW
25 MM LINEAR GUIDES
WITH BELLOWS

24,000 RPM SPINDLE
2.2 KW POWER
TEKNOMOTOR, ITALY

X & Y AXES
NEMA 34 STEPPERS
MADE IN JAPAN

SINGLE PHASE INPUT
REQUIRED

BELLOWS
INSTALLED
ON X & Y



MACHINE CONTROL
BOX

EXTRUDED
ALUMINIUM
TSLOT
PROFILES

ALL MADE IN INDIA
COMPONENTS - DRIVERS, POWER
SUPPLY, VFD, SWITCHES, FAN,
ETC.

PIONEERING COMPOSITE
SUPERSTRUCTURE WITH
LIFETIME WARRANTY

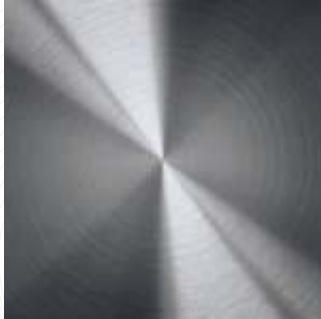
USE YOUR LAPTOP/PC

REQUIRES A USB 2.0 PORT &
OPEN SOURCE SOFTWARES

OTHER CONTROLLERS ALSO AVAILABLE

OTHER CONTROLLER OPTIONS ALSO AVAILABLE

COMPATIBLE WITH



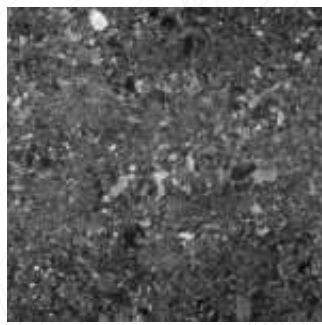
ALUMINIUM



EN 8 / 24 / 31 / 32 UNTREATED STEEL



COPPER



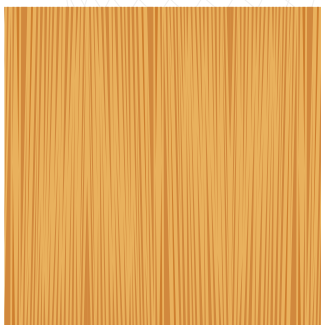
GRANITE



BRASS



PCB'S



Foam, ACP Sheet, Lead, Rubber, Silicone & other soft metals, materials & alloys.

ACCESSORIES INCLUDED WITH THE MACHINE

Cutting Bits

- Milling Bits - 5 PCS,
 - 3MM Dia Endmill
 - 4MM Dia Endmill
 - 6MM Dia Endmill

Collets for Spindle

- ER 16/20/25 Collet (Based on Spindle) - 3 PCS
 - 3MM Dia
 - 4MM Dia
 - 6MM Dia

Others

- T Nuts (For Securing the Material) - 10 Pcs
- Spanner Compatible with spindle Nut
- Connector Cable - 1 Piece
- Stock Mounting Bolts & Nuts - 8 Pcs
- Composite Stock Holders - 4 Pcs

- Machine is shipped fully built in a plug & play condition
- Installation is not required - If requested additional costs will apply
- If shipped with a control pc, it is shipped fully configured in plug & play condition

LASERS

Make Your Machine 2-in-1 Laser & Spindle



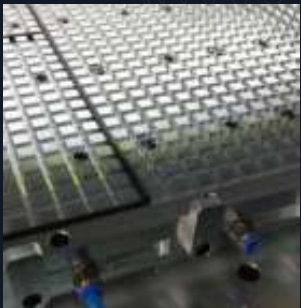
*with Arduino Controller Only

CLAMPING



**OPTIONS,
UPGRADES &
ACCESSORIES**

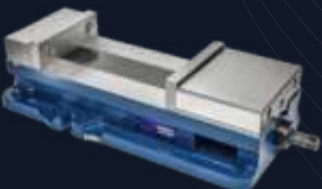
OTHER ACCESSORIES



Probes



Flood Cooling



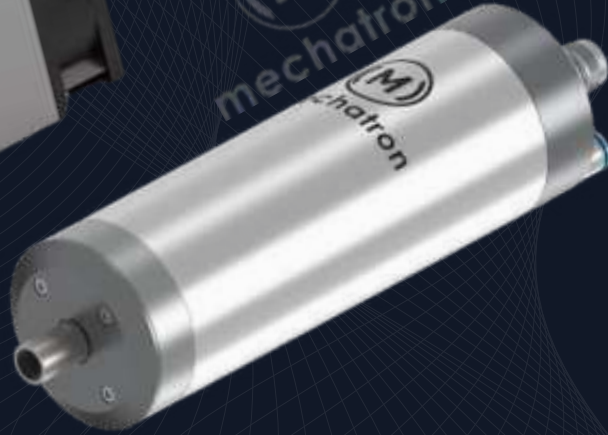
Bellows

SPINDLE OPTIONS



Rectangular - Air Cooled
ER 11 / 16 / 20 / 25 / 32
Runout - ~10 Microns
6000 - 42000 RPM
0.22 to 7 KW
MTC / QTC

Teknomotor, Made in Italy



Round - Air / Water Cooled
Runout - <5 Microns
9000 - 60000 RPM
ER 11 / 16 / 20
0.8 to 8.5 KW
MTC / QTC

Mechatron, Made in Germany



Flat Mounting - Air / Water Cooled
Runout - <3 Microns *
30,000 - 60,000 RPM
ER 16 / 20 / 25
1.5 to 5 KW
MTC / QTC

Spinogy, Made in Germany

ENCLOSURES

**OPTIONS,
UPGRADES &
ACCESSORIES**

& OTHERS

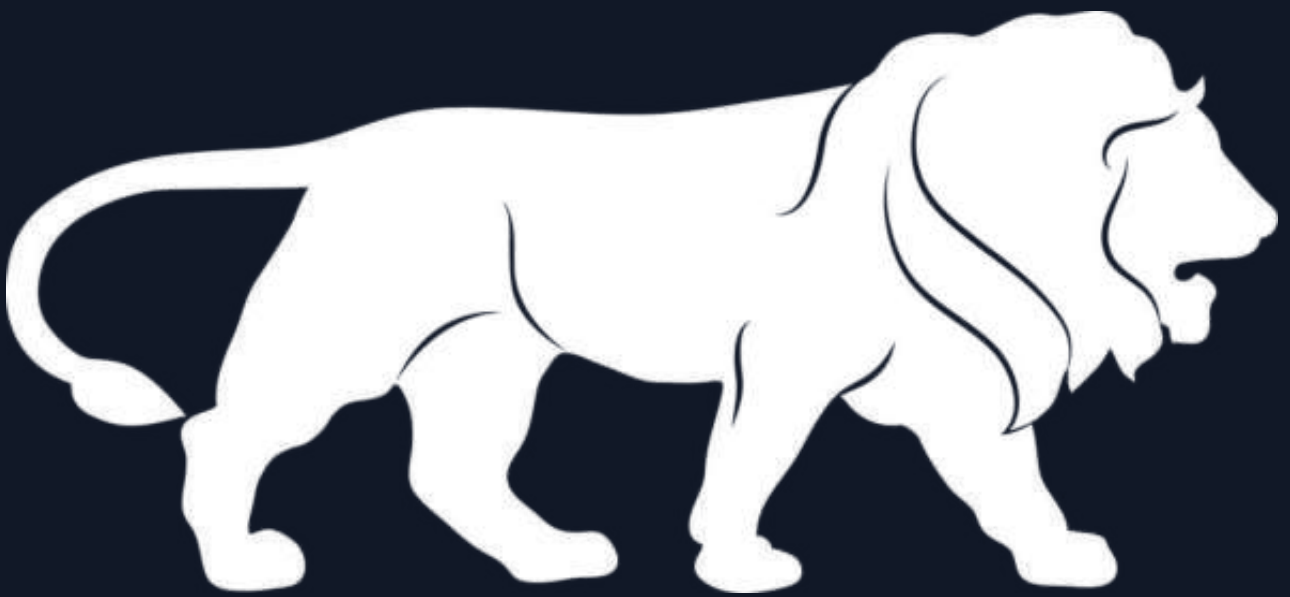
SERVOS



Made in USA | Comprehensive 3 Years Warranty



PROUDLY
MADE IN INDIA



ENGINEER BEAUTIFUL