

Up to 75 %  
Made in India Parts



## Manufacturing / Tool Rooms



### High Speed Spindle

Spindles from Teknomotor, Italy rated for Continuous Operations - Suitable for soft materials like plastics, acrylic, wood, mdf etc.



### Innovative Materials

World's first Composite Superstructure CNC with Lifetime Warranty on the material. No Sagging, hogging, rust or corrosion



### Rated for 24/7 Ops

Run long operations with confidence. High quality Spindles, Steppers and Electronics enable high productivity.

Call / WhatsApp /  
Telegram

+91 90190 54837



Our Location

Bangalore,  
Karnataka  
India



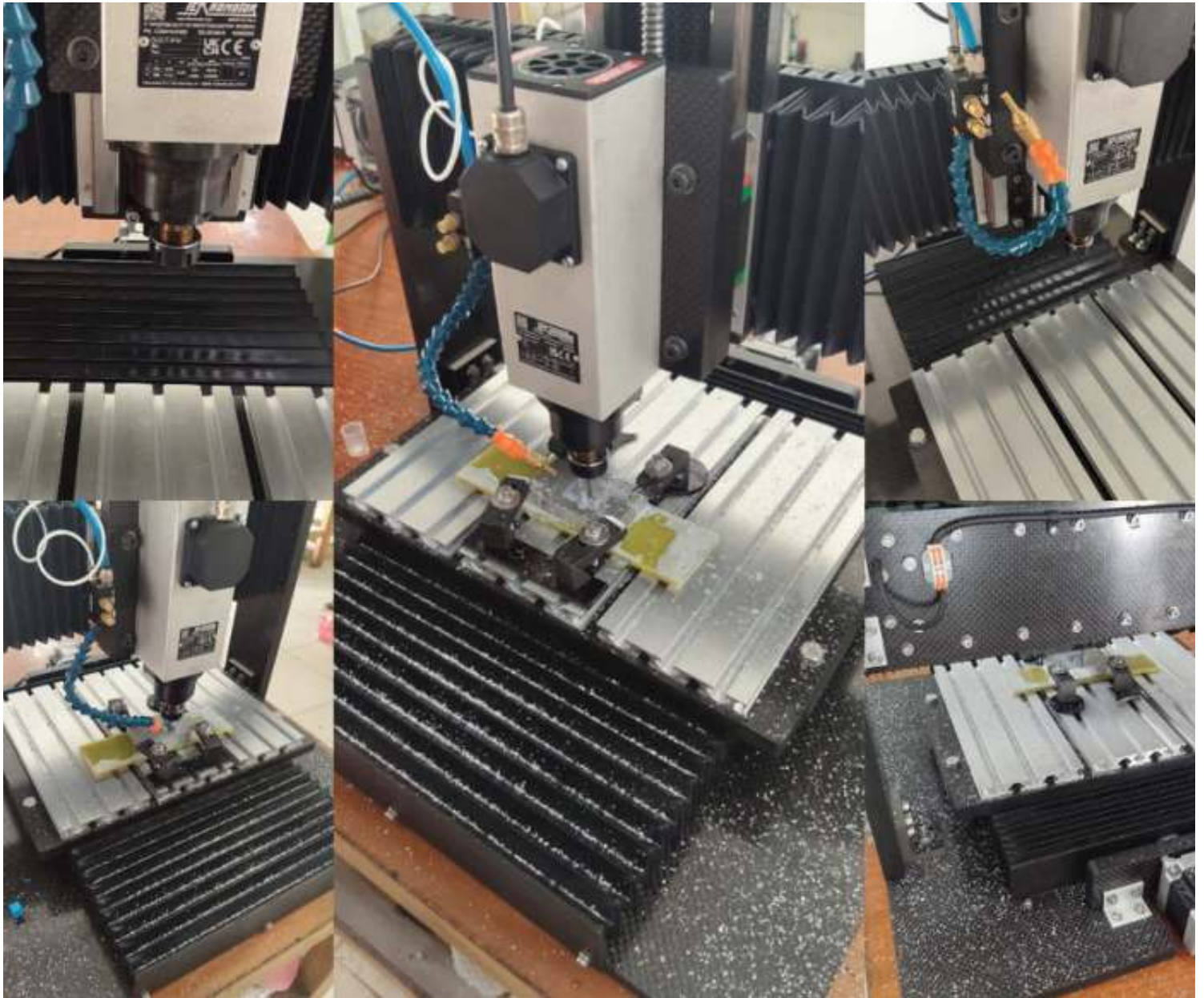
# Technical Specifications

Machine Type	3 Axis
Working Area X x Y	400 x 300 MM
Z Axis Travel	100 MM (Customizable)
Footprint - Machine	750 x 750 MM
Footprint - Control Box	610 x 450 MM
Chassis	Carbon Fiber / Fiber Glass Superstructure - Desktop/Tabletop
Controller Type	<b>LinuxCNC Desktop PC based Controller</b> <ul style="list-style-type: none"> <li>• All pc's ship with a Full HD monitor, Keyboard &amp; Mouse</li> <li>• Spindle Speed Control &amp; Automatic Mist Cooling on/off through Gcode</li> </ul> Other Non-PC Controller Options Available
Max Travel Speed (X, Y & Z)	5 Meters / Minute
Spindle - Country of Origin	Teknomotor, Italy
Spindle - Power	2.2 KW / 3 HP
Spindle - MAX RPM	24,000
Spindle - Tool Change type	MTC - Manual Tool Change
Spindle - Collet	ER20
Spindle Maximum Run-out (Certified)	<20 Microns
Spindle Maximum Run-out (Tested)	<10 Microns
Drive - All Axis	Hiwin/THK/Other Rolled Ball Screw - 20 MM
Guides - All Axis	Hiwin/THK/Other 25 MM Linear Guide & Block
Drive Motors	NEMA 34 - Stepper Motor (Made in India)
Certified Repeat Positioning Accuracy	<50 Microns
Tested Repeat Positioning Accuracy	Between 15-25 Microns / 0.015 to 0.025 MM

Spindle Control	Automatic VFD Control through GCODE/MCODE
Stock / Material Fixturing Support	Aluminium Extruded T Slot Stock Mounting Profiles
Movement	Simultaneous 3 Axis Motion – Full Interpolation
Machine Movement Type	Moving Bed / Fixed Gantry System
Ship Configuration	Ships Fully Assembled with selected accessories
Continuous Operations Capable	Yes, Certified for 24/7 Operations
Warranty	<b>1 Year Warranty – All Parts Covered</b>
Extended Warranty	Optional - Up to 10 Additional Years. Available in increments of 1/2/3/4/5 Years
Annual Maintenance Contracts (AMC)	Optional - Up to 10 Additional Years. Available in increments of 1/2/3/4/5 Years
Superstructure Warranty	Lifetime Warranty on all composite parts installed on the machines. Warranty applicable under normal operating conditions.
Certification	ISO 9001 & CE Certified
CAM Support	Fully compliant with GCODE / MCODE (GRBL) - Solidworks, Catia, Fusion etc.
Tool Sensor	Z-Axis Touch / Non-Touch Sensor - Optional for Purchase
Materials Supported	EN Steel - Untreated, Aluminium, Copper, Brass, Bronze, Zinc, Magnesium, Lead, Gold, Silver, Platinum, Plastics, Copper-Tungsten, Epoxy, Graphite, ABS, Polycarbonate, Acrylic, Composites, carbon fiber, fiber glass, aramid, fibre Glass, Carbon Fibre, Wood, MDF, PCB
Calibrated By	All of our measurements are made with Mitutoyo calibrated instruments
Diode Laser Compatibility	Yes - With Arduino Controller option Only
Power Input	Single Phase Input – 220V / 110V
Current Requirement	16 Amp Plug Point Required
Bellow Implementation	Installed on X & Y- Reduces Working Area by 12-15%
Fully Transparent Enclosure	Optional

Machine Code Support	Fully Compliant with GCODE / MCODE
Control PC	Desktop with Monitor, Keyboard & Mouse - LinuxCNC Preinstalled
Software Provided	Gsender/UGS (Machine Control)
Cooling System	Air Cooled Spindle. Mist Cooling with Flex Pipe Installed with an integrated solenoid valve controlled with the CNC Controller through GCODE

## ZERO Chinese Parts



**Meteor 4030 HD**  
**3 AXIS CNC**

# Highlights

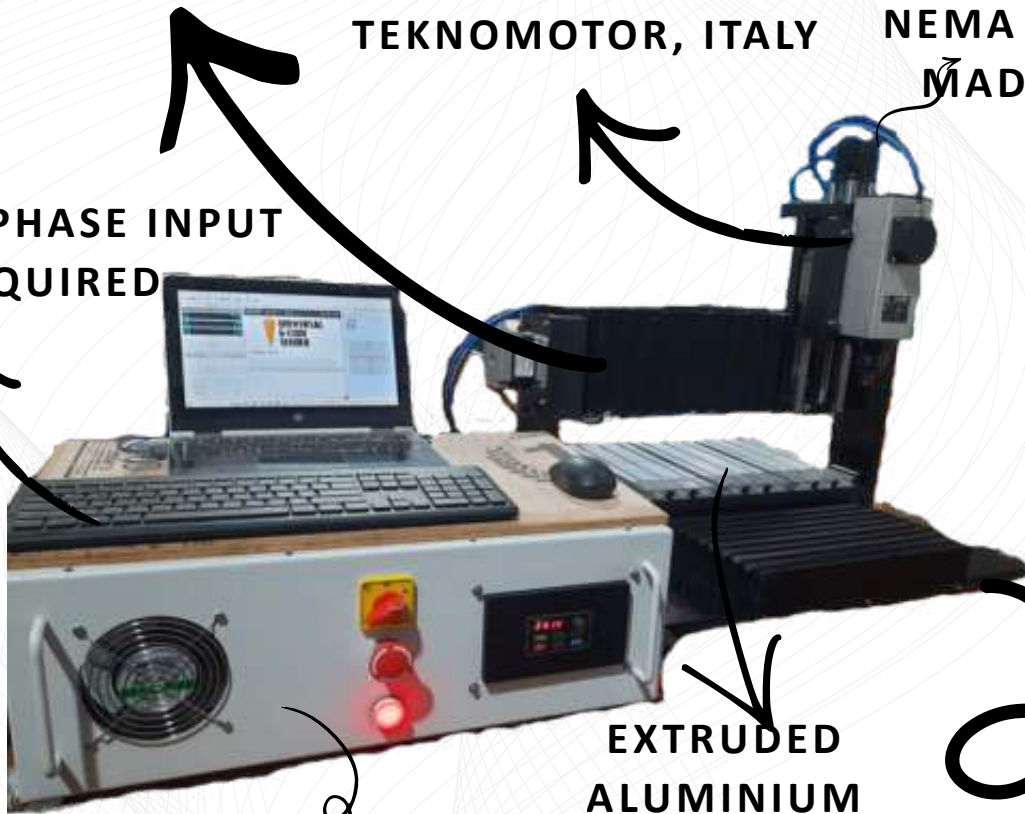


HIWIN / THK  
20MM BALL SCREW  
25 MM LINEAR GUIDES  
WITH BELLOWS

24,000 RPM SPINDLE  
2.2 KW POWER  
TEKNOMOTOR, ITALY

X & Y AXES  
NEMA 34 STEPPERS  
MADE IN JAPAN

SINGLE PHASE INPUT  
REQUIRED



MACHINE CONTROL  
BOX

EXTRUDED  
ALUMINIUM  
TSLOT  
PROFILES

ALL MADE IN INDIA  
COMPONENTS - DRIVERS, POWER  
SUPPLY, VFD, SWITCHES, FAN,  
ETC.

PIONEERING COMPOSITE  
SUPERSTRUCTURE WITH  
LIFETIME WARRANTY

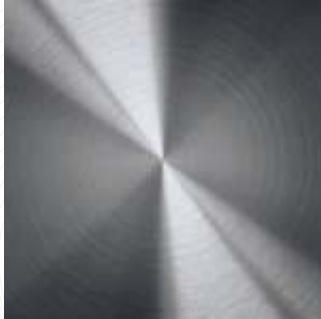
USE YOUR LAPTOP/PC

REQUIRES A USB 2.0 PORT &  
OPEN SOURCE SOFTWARES

OTHER CONTROLLERS ALSO AVAILABLE

OTHER CONTROLLER OPTIONS ALSO AVAILABLE

# COMPATIBLE WITH



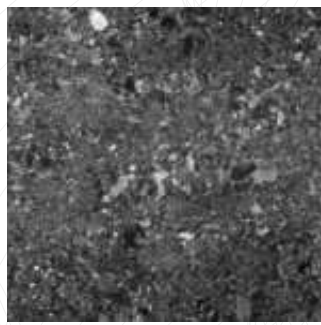
**ALUMINIUM**



**EN 8 / 24 / 31 / 32 UNTREATED STEEL**



**COPPER**



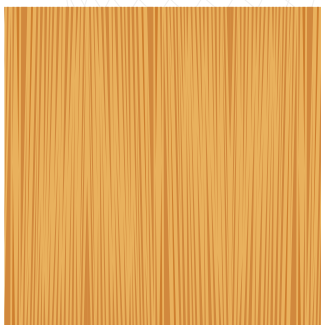
**GRANITE**



**BRASS**



**PCB'S**



Foam, ACP Sheet, Lead, Rubber, Silicone & other soft metals, materials & alloys.

# ACCESSORIES INCLUDED WITH THE MACHINE

## Cutting Bits

- Milling Bits - 5 PCS,
  - 3MM Dia Endmill
  - 4MM Dia Endmill
  - 6MM Dia Endmill

## Collets for Spindle

- ER 16/20/25 Collet (Based on Spindle) - 3 PCS
  - 3MM Dia
  - 4MM Dia
  - 6MM Dia

## Others

- T Nuts (For Securing the Material) - 10 Pcs
- Spanner Compatible with spindle Nut
- Connector Cable - 1 Piece
- Stock Mounting Bolts & Nuts - 8 Pcs
- Composite Stock Holders - 4 Pcs

- Machine is shipped fully built in a plug & play condition
- Installation is not required - If requested additional costs will apply
- If shipped with a control pc, it is shipped fully configured in plug & play condition

# LASERS

Make Your Machine 2-in-1 Laser & Spindle



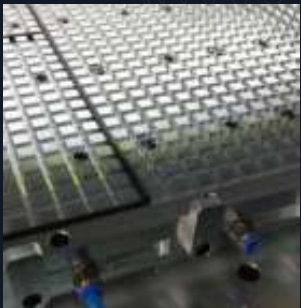
\*with Arduino Controller Only

# CLAMPING



**OPTIONS,  
UPGRADES &  
ACCESSORIES**

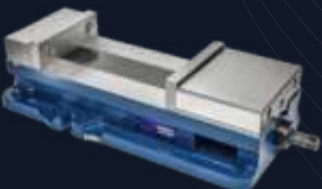
# OTHER ACCESSORIES



Probes



Flood Cooling



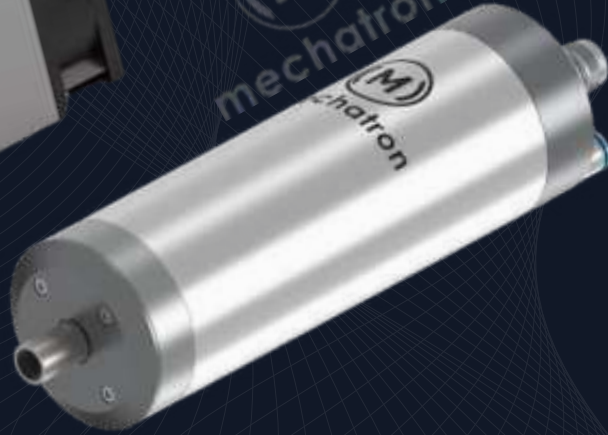
Bellows

# SPINDLE OPTIONS



Rectangular - Air Cooled  
 ER 11 / 16 / 20 / 25 / 32  
 Runout - ~10 Microns  
 6000 - 42000 RPM  
 0.22 to 7 KW  
 MTC / QTC

Teknomotor, Made in Italy



Round - Air / Water Cooled  
 Runout - <5 Microns  
 9000 - 60000 RPM  
 ER 11 / 16 / 20  
 0.8 to 8.5 KW  
 MTC / QTC

Mechatron, Made in Germany



Flat Mounting - Air / Water Cooled  
 Runout - <3 Microns \*  
 30,000 - 60,000 RPM  
 ER 16 / 20 / 25  
 1.5 to 5 KW  
 MTC / QTC

Spinogy, Made in Germany

# ENCLOSURES

**OPTIONS,  
 UPGRADES &  
 ACCESSORIES**

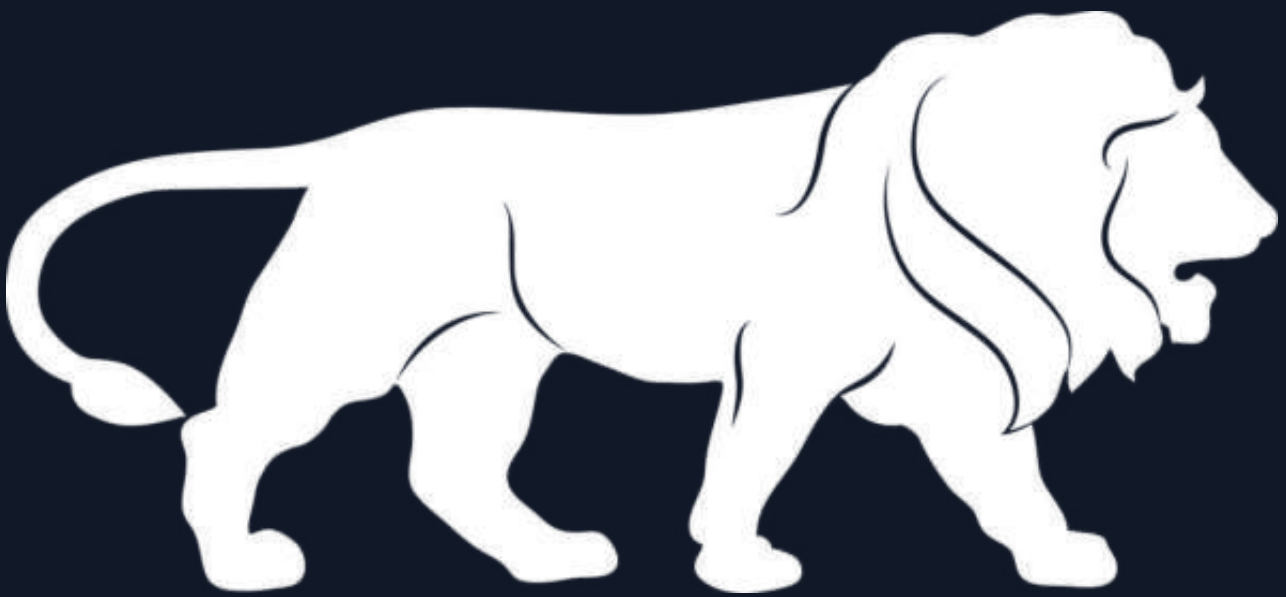
**& OTHERS**

# SERVOS



Made in USA | Comprehensive 3 Years Warranty

PROUDLY  
MADE IN INDIA



ENGINEER BEAUTIFUL