

Upto 75%
Made in India Parts



Manufacturing / Tool Rooms



High Speed Spindle

Spindles from Teknomotor, Italy rated for Continuous Operations - Suitable for soft materials like plastics, acrylic, wood, mdf etc.



Innovative Materials

World's first Composite Superstructure CNC with Lifetime Warranty on the material. No Sagging, hogging, rust or corrosion



Rated for 24/7 Ops

Run long operations with confidence. High quality Spindles, Steppers and Electronics enable high productivity.

Call / WhatsApp /
Telegram

+91 90190 54837



Our Location

Bangalore,
Karnataka
India



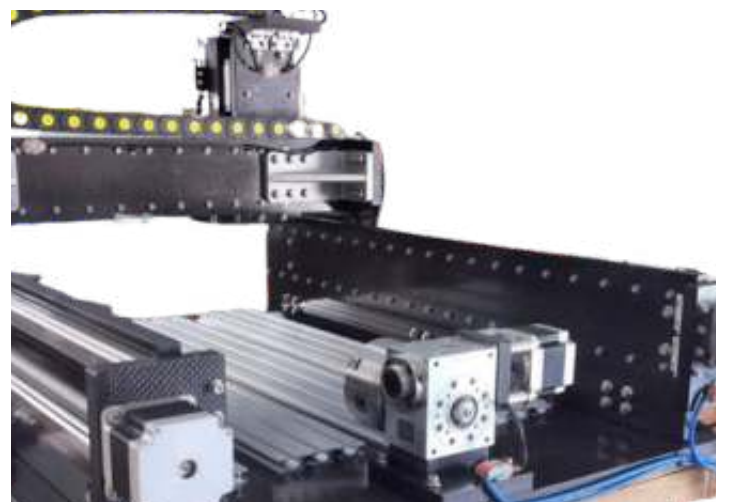
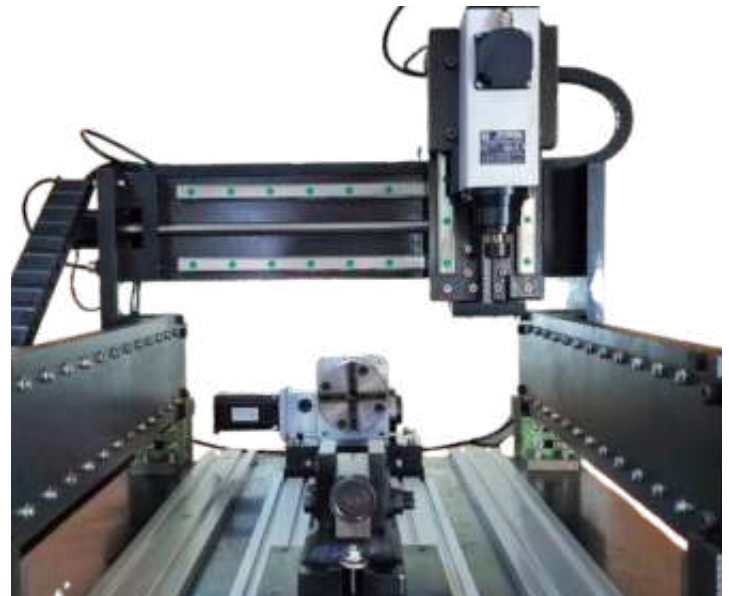
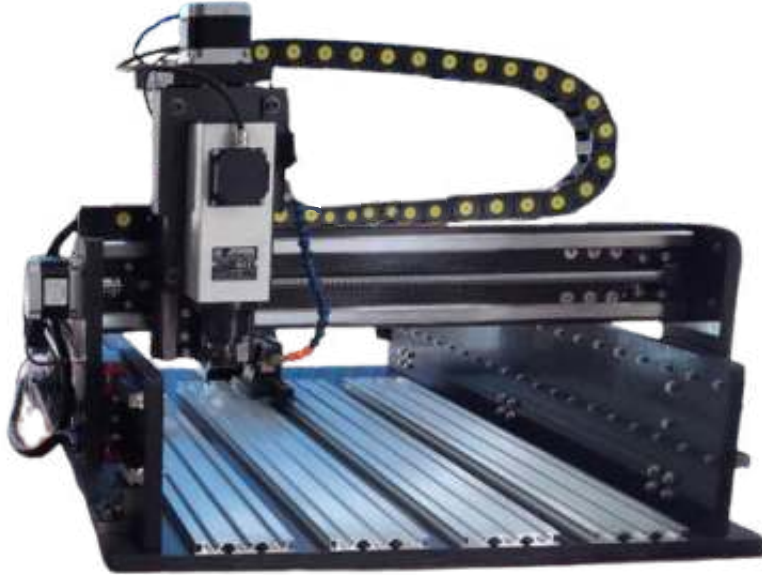
Technical Specifications

Machine Type	4 Axis
Working Area X x Y	900 x 600 MM
Z Axis Travel	150 MM (Customizable)
A Axis Usable Length (4th Axis)	650 MM
Footprint - Machine	1300 x 1050 MM
Footprint - Control Box	610 x 450 MM
Chassis - Composite Superstructure	Carbon Fiber / Fiber Glass Superstructure - Desktop/Tabletop Type
Controller Type	LinuxCNC Desktop PC based Controller <ul style="list-style-type: none">• All pc's ship with a Full HD monitor, Keyboard & Mouse• Spindle Speed Control & Automatic Mist Cooling on/off through Gcode• Other Non-PC Controller Options Available
Max Travel Speed (X, Y & Z)	4 Meters / Minute
Spindle - Country of Origin	Teknomotor, Italy
Spindle - Power	2.2 KW / 3 HP
Spindle - MAX RPM	24,000
Spindle - Tool Change type	MTC - Manual Tool Change
Spindle - Collet	ER20
Spindle Maximum Run-out (Certified)	<20 Microns
Spindle Maximum Run-out (Tested)	<10 Microns
Drive - All Axis	Hiwin/THK/Other Rolled Ball Screw - 20 MM
Guides - All Axis	Hiwin/THK/Other 25 MM Linear Guide & Block
Drive Motors	NEMA 34 - Stepper Motor (Made in Japan)
Certified Repeat Positioning Accuracy	<50 Microns

Tested Repeat Positioning Accuracy	Between 15-25 Microns / 0.015 to 0.025 MM
A Axis Precision (4th Axis)	<5 ArcMin Backlash
Spindle Control	Automatic VFD Control through GCODE/MCODE
Stock / Material Fixturing Support	Aluminium Extruded T Slot Stock Mounting Profiles
A Axis Stock Holding (4th Axis)	High Precision 125MM 4 Jaw Chuck & Variable Height Tailstock(80 - 108 MM)
Movement	Simultaneous 4 Axis Motion – Full Interpolation
Machine Movement Type	Fixed Bed / Moving Gantry System
Ship Configuration	Ships Fully Assembled with selected accessories
Continuous Operations Capable	Yes, Certified for 24/7 Operations
Warranty	1 Year Warranty – All Parts Covered
Extended Warranty	Optional - Up to 10 Additional Years. Available in increments of 1/2/3/4/5 Years
Maintenance Contracts	Optional - Up to 10 Additional Years. Available in increments of 1/2/3/4/5 Years
Superstructure Warranty	Lifetime Warranty on all composite parts installed on the machines. Warranty applicable under normal operating conditions.
Certification	ISO 9001 & CE Certified
CAM Support	Fully compliant with GCODE / MCODE (GRBL) - Solidworks, Catia, Fusion etc.
Tool Sensor	Z-Axis Touch / Non-Touch Sensor - Optional for Purchase
Materials Supported	EN Steel - Untreated, Aluminium, Copper, Brass, Bronze, Zinc, Magnesium, Lead, Gold, Silver, Platinum, Plastics, Copper-Tungsten, Epoxy, Graphite, ABS, Polycarbonate, Acrylic, composites carbon fiber, fiber glass, aramid, Wood, MDF, PCB
Calibrated By	All of our measurements are made with Mitutoyo calibrated instruments
Diode Laser Compatibility	Yes - With Arduino Controller option Only
Power Input	Single Phase Input – 220V / 110V

Current Requirement	16 Amp Plug Point Required
Bellow Implementation	Optional - Reduces Working Area by 12-15%
Mild Steel Table	Optional
Control PC	Desktop PC with 22 Inch Full HD Monitor, Keyboard & Mouse - LinuxCNC Preinstalled
Software Provided	LinuxCNC
Cooling System	Air Cooled Spindle. Mist Cooling with Flex Pipe Installed with an integrated solenoid valve controlled with the CNC Controller through GCODE

ZERO Chinese Parts



Majestic 9060 Pro

4 AXIS CNC

Highlights



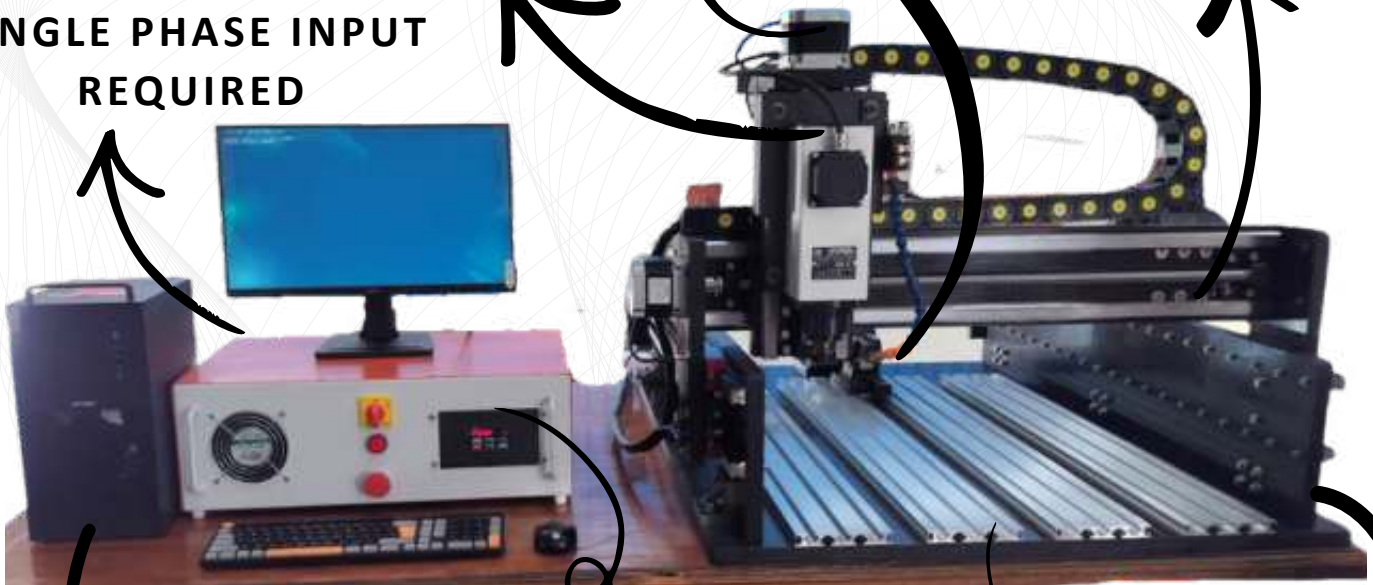
ALL AXES
TAMAGAWA
NEMA 34 STEPPERS
MADE IN JAPAN

WORKM GEARBOX
< 5 ARC MIN
BACKLASH &
TAILSTOCK

HIWIN / THK
20MM BALL SCREW
25 MM LINEAR GUIDES
HA/CA GUIDE BLOCKS

24,000 RPM SPINDLE
TEKNOMOTOR, ITALY

SINGLE PHASE INPUT
REQUIRED



MACHINE CONTROL
BOX

EXTRUDED
ALUMINIUM T SLOT
PROFILES

ALL MADE IN INDIA
COMPONENTS - DRIVERS, POWER
SUPPLY, VFD, SWITCHES, FAN,
ETC.

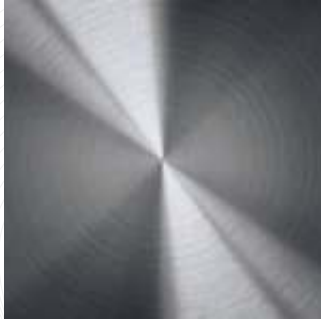
PC BASED
CONTROLLER

FULL DESKTOP WITH MONITOR
KEYBOARD & MOUSE

PIONEERING COMPOSITE
SUPERSTRUCTURE WITH
LIFETIME WARRANTY

OTHER CONTROLLER OPTIONS ALSO AVAILABLE

COMPATIBLE WITH



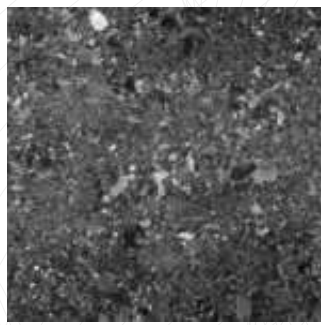
ALUMINIUM



EN 8 / 24 / 31 / 32 UNTREATED STEEL



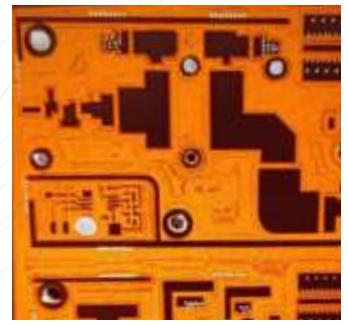
COPPER



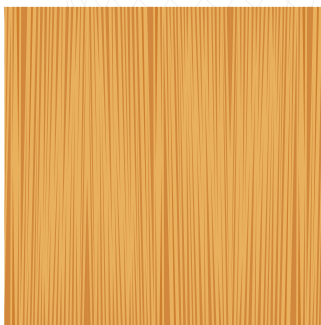
GRANITE



BRASS



PCB'S



Foam, ACP Sheet, Lead, Rubber, Silicone & other soft metals, materials & alloys.

ACCESSORIES INCLUDED WITH THE MACHINE

Cutting Bits

Milling Bits - 5 PCS,

---3MM Dia Endmill

---4MM Dia Endmill

---6MM Dia Endmill

Collets for Spindle

ER 16/20/25 Collet (Based on Spindle) - 3 PCS

---3MM Dia

---4MM Dia

---6MM Dia

Others

-- T Nuts (For Securing the Material) - 10 Pcs

-- Spanner Compatible with spindle Nut

-- Connector Cable - 1 Piece

-- Stock Mounting Bolts & Nuts - 8 Pcs

-- Composite Stock Holders - 4 Pcs

- Machine is shipped fully built in a plug & play condition
- Installation is not required - If requested additional costs will apply
- If shipped with a control pc, it is shipped fully configured in plug & play condition

CHUCKS

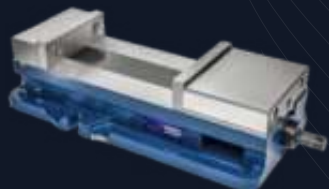


3 JAW CHUCK

*with Arduino Controller Only



CLAMPING



**OPTIONS,
UPGRADES &
ACCESSORIES**

OTHER ACCESSORIES



Probes



Flood Cooling

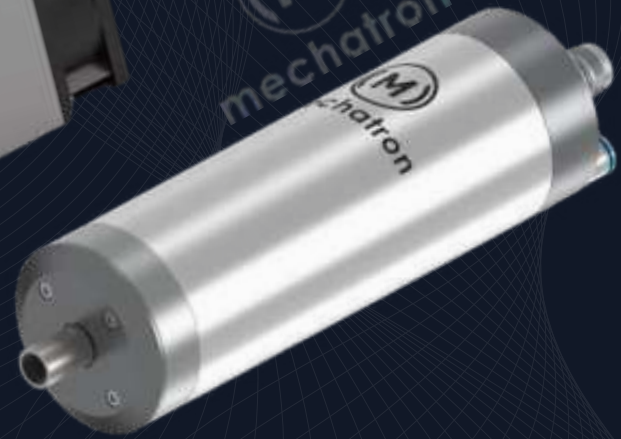


Bellows

SPINDLE OPTIONS



Rectangular - Air Cooled
 ER 11 / 16 / 20 / 25 / 32
 Runout - ~10 Microns
 6000 - 42000 RPM
 0.22 to 7 KW
 MTC / QTC
 Teknomotor, Made in Italy



Round - Air / Water Cooled
 Runout - <5 Microns
 9000 - 60000 RPM
 ER 11 / 16 / 20
 0.8 to 8.5 KW
 MTC / QTC
 Mechatron, Made in Germany



Flat Mounting - Air / Water Cooled
 Runout - <3 Microns *
 30,000 - 60,000 RPM
 ER 16 / 20 / 25
 1.5 to 5 KW
 MTC / QTC
 Spingy, Made in Germany

ENCLOSURES

**OPTIONS,
 UPGRADES &
 ACCESSORIES**

& OTHERS

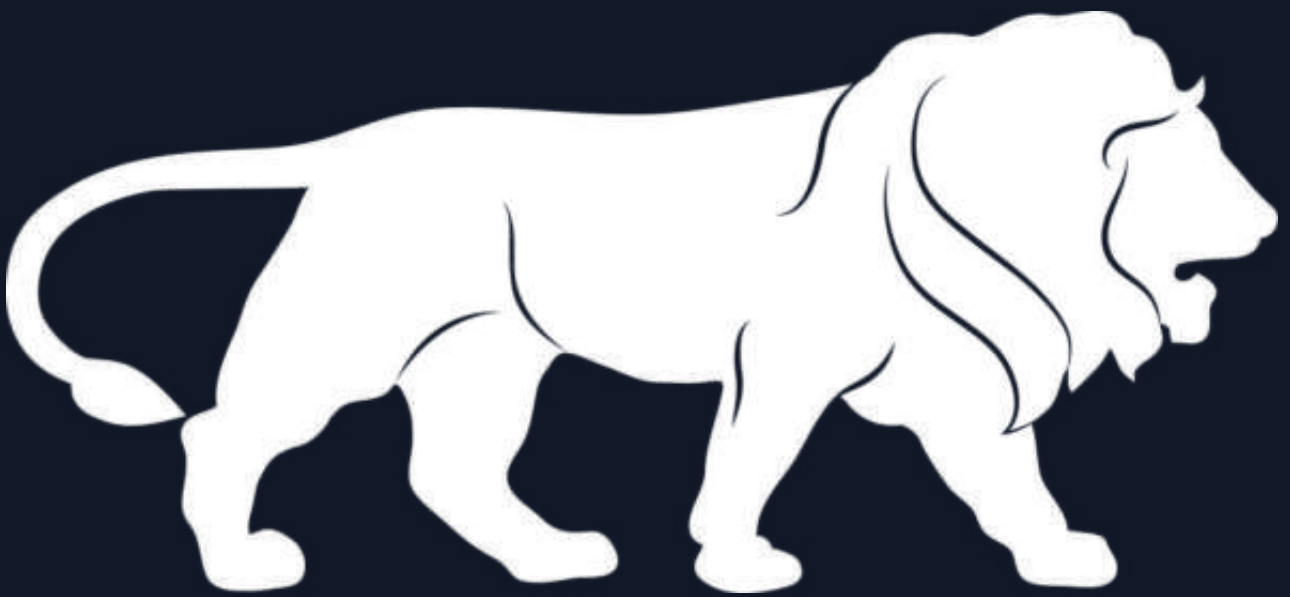
SERVOS



Made in USA | Comprehensive 3 Years Warranty



PROUDLY
MADE IN INDIA



ENGINEER BEAUTIFUL