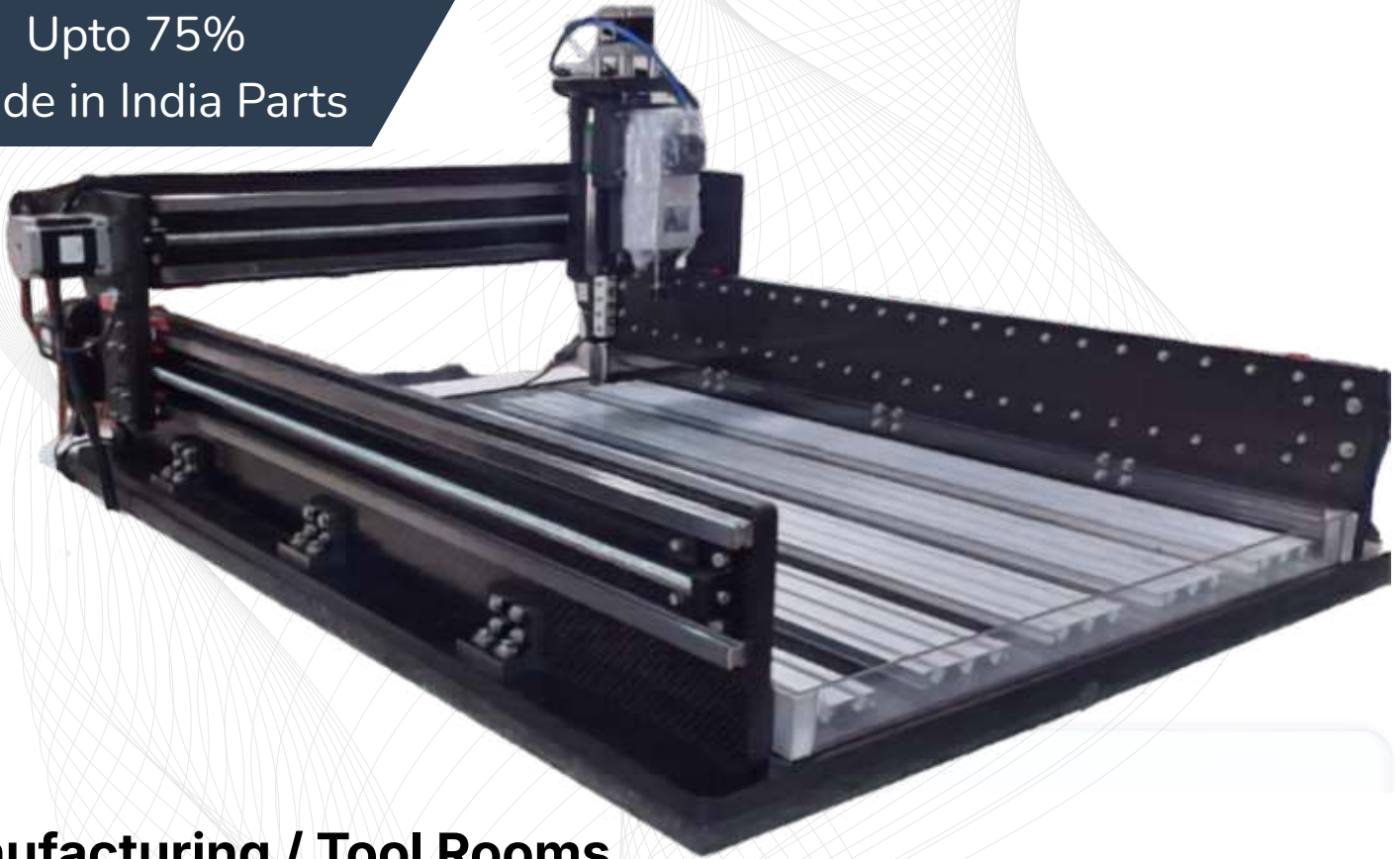


Upto 75%
Made in India Parts



Manufacturing / Tool Rooms



High Speed Spindle

Spindles from Teknomotor, Italy rated for Continuous Operations - Suitable for soft materials like plastics, acrylic, wood, mdf etc.



Innovative Materials

World's first Composite Superstructure CNC with Lifetime Warranty on the material. No Sagging, hogging, rust or corrosion



Rated for 24/7 Ops

Run long operations with confidence. High quality Spindles, Steppers and Electronics enable high productivity.

Call / WhatsApp /
Telegram

+91 90190 54837



Our Location

Bangalore,
Karnataka
India



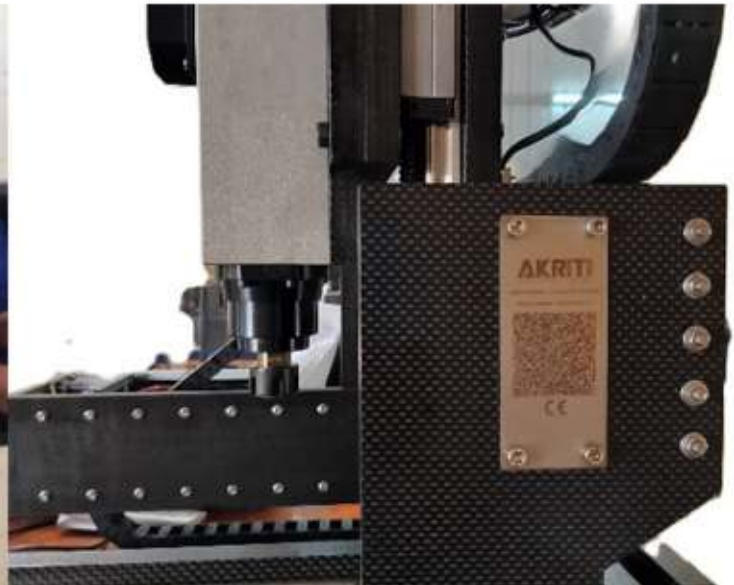
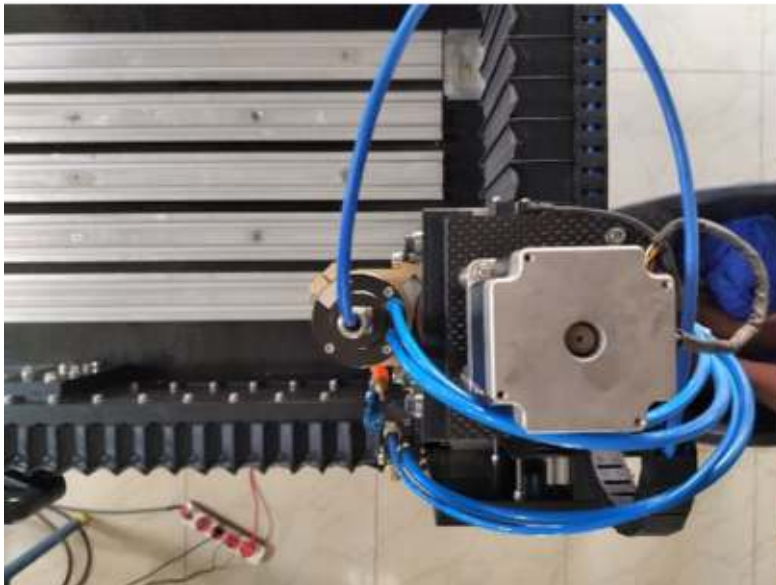
Technical Specifications

| | |
|---------------------------------------|--|
| Machine Type | 3 Axis |
| Working Area X x Y | 900 x 600 MM |
| Z Axis Travel | 150 MM (Customizable) |
| Footprint - Machine | 1300 x 1050 MM |
| Chassis - Composite Superstructure | Carbon Fiber / Fiber Glass Superstructure - Desktop/Tabletop Type |
| Controller Type | <p>LinuxCNC Desktop PC based Controller</p> <ul style="list-style-type: none"> • All pc's ship with a Full HD monitor, Keyboard & Mouse • Spindle Speed Control & Automatic Mist Cooling on/off through Gcode <p>Other Non-PC Controller Options Available</p> |
| Max Travel Speed (X, Y & Z) | 4 Meters / Minute |
| Spindle - Country of Origin | Teknomotor, Italy |
| Spindle - Power | 2.2 KW / 3 HP |
| Spindle - MAX RPM | 24,000 |
| Spindle - Tool Change type | MTC - Manual Tool Change |
| Spindle - Collet | ER20 |
| Waterbath - For Machining CF/FG | Embedded on Base |
| Spindle Maximum Run-out (Certified) | <20 Microns |
| Spindle Maximum Run-out (Tested) | <10 Microns |
| Drive - All Axis | Hiwin/THK/Other Rolled Ball Screw - 20 MM |
| Guides - All Axis | Hiwin/THK/Other 25 MM Linear Guide & Block |
| Drive Motors | NEMA 34 - Stepper Motor (Made in Japan) |
| Certified Repeat Positioning Accuracy | <50 Microns |
| Tested Repeat Positioning Accuracy | Between 15-25 Microns / 0.015 to 0.025 MM |

| | |
|------------------------------------|--|
| Spindle Control | Automatic VFD Control through GCODE/MCODE |
| Stock / Material Fixturing Support | Aluminium Extruded T Slot Stock Mounting profiles |
| Movement | Simultaneous 3 Axis Motion – Full Interpolation |
| Machine Movement Type | Fixed Bed / Moving Gantry System |
| Ship Configuration | Ships Fully Assembled with selected accessories |
| Continuous Operations Capable | Yes, Certified for 24/7 Operations |
| Warranty | 1 Year Warranty – All Parts Covered |
| Extended Warranty | Optional - Up to 10 Additional Years. Available in increments of 1/2/3/4/5 Years |
| Maintenance Contracts | Optional - Up to 10 Additional Years. Available in increments of 1/2/3/4/5 Years |
| Superstructure Warranty | Lifetime Warranty on all composite parts installed on the machines. Warranty applicable under normal operating conditions. |
| Certification | ISO 9001 & CE Certified |
| CAM Support | Fully compliant with GCODE / MCODE (GRBL) - Solidworks, Catia, Fusion etc. |
| Tool Sensor | Z-Axis Touch / Non-Touch Sensor - Optional for Purchase |
| Materials Supported | EN Steel - Untreated, Aluminium, Copper, Brass, Bronze, Zinc, Magnesium, Lead, Gold, Silver, Platinum, Plastics, Copper-Tungsten, Epoxy, Graphite, ABS, Polycarbonate, Acrylic, composites, carbon fiber, fiber glass, aramid, Wood, MDF, PCB etc. |
| Calibrated By | All of our measurements are made with Mitutoyo calibrated instruments |
| Diode Laser Compatibility | Yes - With Arduino Controller option Only |
| Power Input | Single Phase Input – 220V / 110V |
| Current Requirement | 16 Amp Plug Point Required |
| Bellow Implementation | Optional - Reduces Working Area by 12-15% |
| Mild Steel Table | Optional |

| | |
|-------------------|--|
| CAM Support | Fully compliant with GCODE / MCODE (GRBL) - Solidworks, Catia, Fusion etc. |
| Control PC | Desktop PC with 22 Inch Full HD Monitor, Keyboard & Mouse - LinuxCNC Preinstalled |
| Software Provided | LinuxCNC |
| Cooling System | Air Cooled Spindle. Mist Cooling with Flex Pipe Installed with an integrated solenoid valve controlled with the CNC Controller through GCODE |

ZERO Chinese Parts



CarbonCut 9060

3 AXIS CNC

Highlights

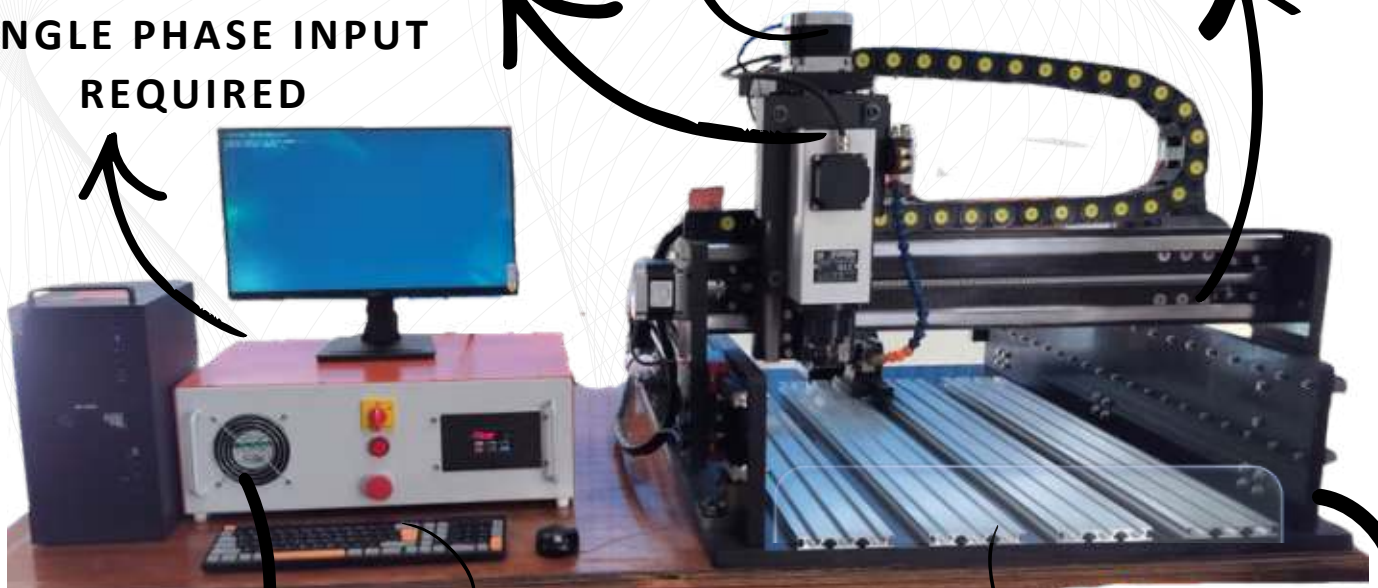


**ALL AXES
TAMAGAWA
NEMA 34 STEPPERS
MADE IN JAPAN**

**24,000 RPM SPINDLE
TEKNOMOTOR, ITALY**

**HIWIN / THK
20MM BALL SCREW
25 MM LINEAR GUIDES
HA/CA GUIDE BLOCKS**

**SINGLE PHASE INPUT
REQUIRED**



MACHINE CONTROL

**MADE IN INDIA COMPONENTS -
CONTROLLER, DRIVERS, POWER
SUPPLY, VFD, SWITCHES, FAN,
ETC.**

**EXTRUDED
ALUMINIUM T SLOT
PROFILES**

**EMBEDDED
WATERBATH**

**STANDALOBNE
CONTROLLER**

**BUTTON AND MPG INTERFACE
WITH USB INPUT**

**PIONEERING COMPOSITE
SUPERSTRUCTURE WITH
LIFETIME WARRANTY**

OTHER CONTROLLER OPTIONS ALSO AVAILABLE

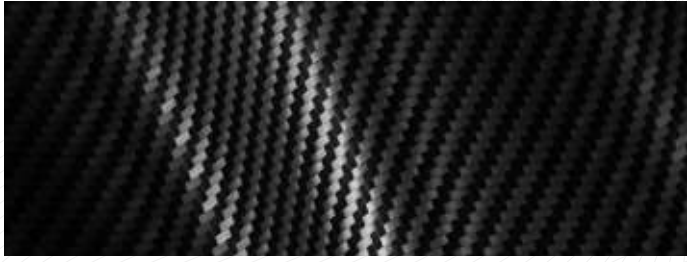
Embedded Waterbath

Addressing the CF & FG Machining Dust Challenge



- The integrated water bath on the machine's base plate enables you to submerge the material underwater prior to machining.
- This design prevents harmful dust from escaping into the environment and simplifies cleaning later on.
- You can keep the water in place for months, cleaning it only when necessary. Our superstructure material is resistant to rust and corrosion.
- Additionally, managing the sludge is straightforward, and it can be stored for disposal at a later time. No additional spend needed on heavy duty vacuum systems and safety equipment.

COMPATIBLE WITH



CARBON FIBER & FIBER GLASS



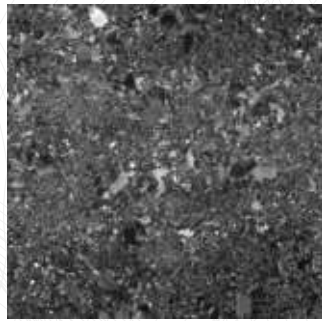
ALUMINIUM



EN 8 / 24 / 31 / 32 UNTREATED STEEL



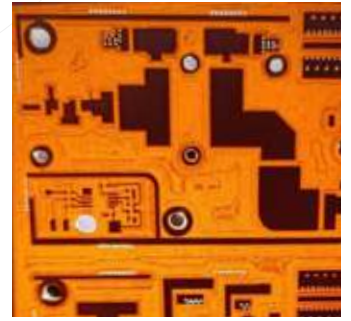
COPPER



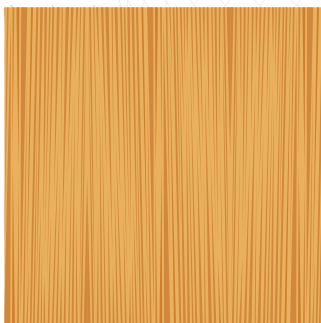
GRANITE



BRASS



PCB'S



Foam, ACP Sheet, Lead, Rubber, Silicone & other soft metals, materials & alloys.

ACCESSORIES INCLUDED WITH THE MACHINE

Cutting Bits

Milling Bits - 5 PCS,

---3MM Dia Endmill

---4MM Dia Endmill

---6MM Dia Endmill

Collets for Spindle

ER 16/20/25 Collet (Based on Spindle) - 3 PCS

---3MM Dia

---4MM Dia

---6MM Dia

Others

-- T Nuts (For Securing the Material) - 10 Pcs

-- Spanner Compatible with spindle Nut

-- Connector Cable - 1 Piece

-- Stock Mounting Bolts & Nuts - 8 Pcs

-- Composite Stock Holders - 4 Pcs

- Machine is shipped fully built in a plug & play condition
- Installation is not required - If requested additional costs will apply
- If shipped with a control pc, it is shipped fully configured in plug & play condition

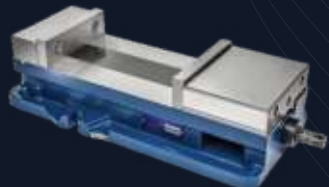
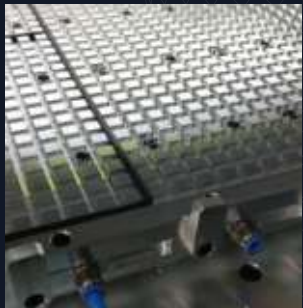
LASERS

Make Your Machine 2-in-1 Laser & Spindle



*with Arduino Controller Only

CLAMPING



**OPTIONS,
UPGRADES &
ACCESSORIES**

OTHER ACCESSORIES



Probes



Flood Cooling



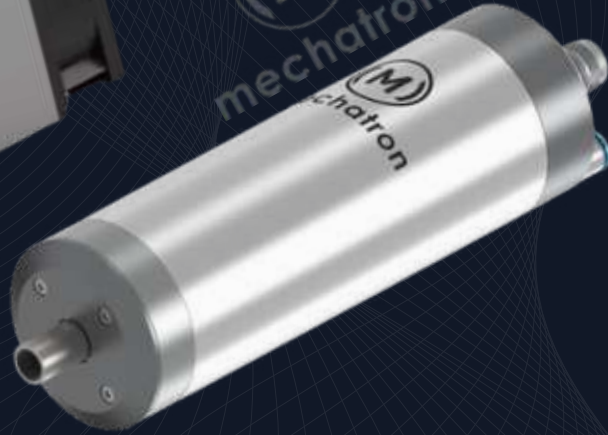
Bellows

SPINDLE OPTIONS



Rectangular - Air Cooled
 ER 11 / 16 / 20 / 25 / 32
 Runout - ~10 Microns
 6000 - 42000 RPM
 0.22 to 7 KW
 MTC / QTC

Teknomotor, Made in Italy



Round - Air / Water Cooled
 Runout - <5 Microns
 9000 - 60000 RPM
 ER 11 / 16 / 20
 0.8 to 8.5 KW
 MTC / QTC

Mechatron, Made in Germany



Flat Mounting - Air / Water Cooled
 Runout - <3 Microns *
 30,000 - 60,000 RPM
 ER 16 / 20 / 25
 1.5 to 5 KW
 MTC / QTC

Spinogy, Made in Germany

ENCLOSURES

**OPTIONS,
 UPGRADES &
 ACCESSORIES**

& OTHERS

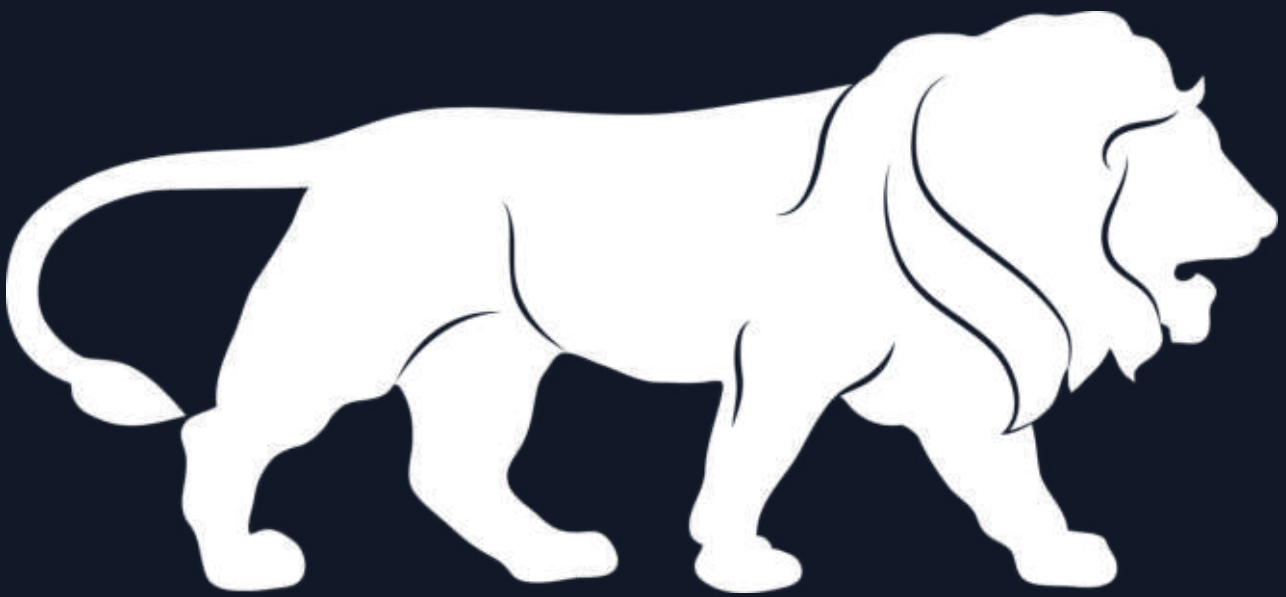


SERVOS



Made in USA | Comprehensive 3 Years Warranty

PROUDLY
MADE IN INDIA



ENGINEER BEAUTIFUL