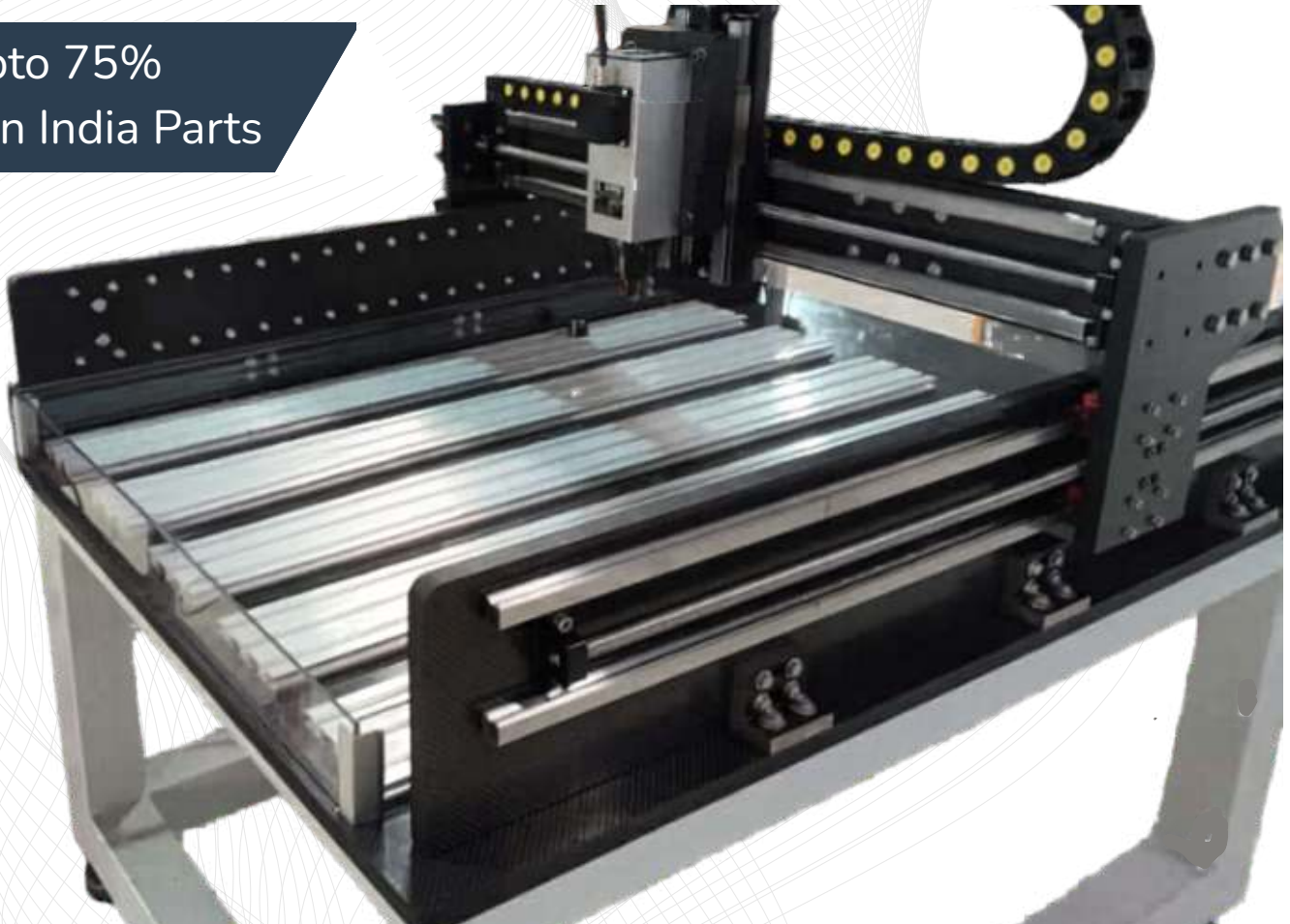


Upto 75%
Made in India Parts



High Speed Spindle

Spindles from Teknomotor, Italy rated for Continuous Operations - Suitable for soft materials like plastics, acrylic, wood, mdf etc.



Innovative Materials

World's first Composite Superstructure CNC with Lifetime Warranty on the material. No Sagging, hogging, rust or corrosion



Rated for 24/7 Ops

Run long operations with confidence. High quality Spindles, Steppers and Electronics enable high productivity.

Call / WhatsApp /
Telegram

+91 90190 54837



Our Location

Bangalore,
Karnataka
India



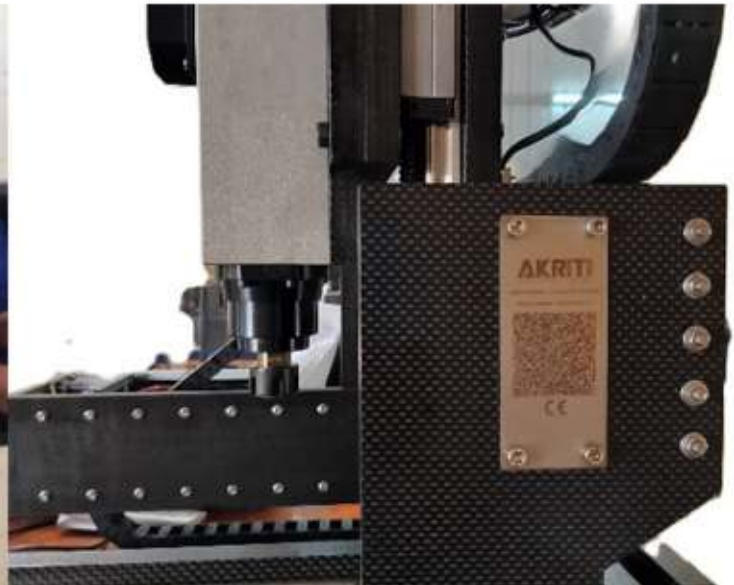
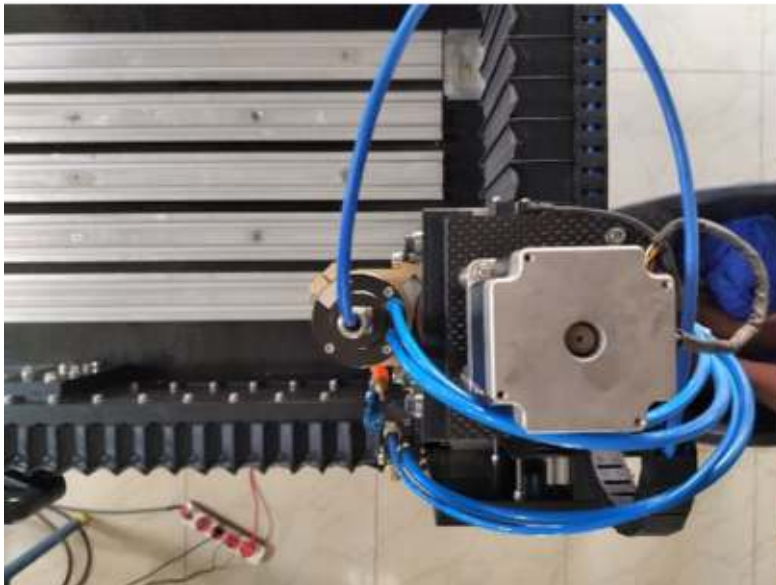
Technical Specifications

Machine Type	3 Axis
Working Area X x Y	1200 x 900 MM
Z Axis Travel	150 MM (Customizable)
Footprint - Machine	1600 x 1350 MM
Chassis - Composite Superstructure	Carbon Fiber / Fiber Glass Superstructure - Desktop/Tabletop Type
Controller Type	LinuxCNC Desktop PC based Controller <ul style="list-style-type: none">• All pc's ship with a Full HD monitor, Keyboard & Mouse• Spindle Speed Control & Automatic Mist Cooling on/off through Gcode• Other Non-PC Controller Options Available
Max Travel Speed (X, Y & Z)	4 Meters / Minute
Spindle - Country of Origin	Teknomotor, Italy
Spindle - Power	2.2 KW / 3 HP
Spindle - MAX RPM	24,000
Spindle - Tool Change type	MTC - Manual Tool Change
Spindle - Collet	ER20
Waterbath - For Machining CF/FG	Embedded on Base
Spindle Maximum Run-out (Certified)	<20 Microns
Spindle Maximum Run-out (Tested)	<10 Microns
Drive - All Axis	Hiwin/THK/Other Rolled Ball Screw - 20 MM
Guides - All Axis	Hiwin/THK/Other 25 MM Linear Guide & Block
Drive Motors	NEMA 34 - Stepper Motor (Made in Japan)
Certified Repeat Positioning Accuracy	<50 Microns
Tested Repeat Positioning Accuracy	Between 15-25 Microns / 0.015 to 0.025 MM

Spindle Control	Automatic VFD Control through GCODE/MCODE
Stock / Material Fixturing Support	Aluminium Extruded T Slot Stock Mounting profiles
Movement	Simultaneous 3 Axis Motion – Full Interpolation
Machine Movement Type	Fixed Bed / Moving Gantry System
Ship Configuration	Ships Fully Assembled with selected accessories
Continuous Operations Capable	Yes, Certified for 24/7 Operations
Warranty	1 Year Warranty – All Parts Covered
Extended Warranty	Optional - Up to 10 Additional Years. Available in increments of 1/2/3/4/5 Years
Maintenance Contracts	Optional - Up to 10 Additional Years. Available in increments of 1/2/3/4/5 Years
Superstructure Warranty	Lifetime Warranty on all composite parts installed on the machines. Warranty applicable under normal operating conditions.
Certification	ISO 9001 & CE Certified
CAM Support	Fully compliant with GCODE / MCODE (GRBL) - Solidworks, Catia, Fusion etc.
Tool Sensor	Z-Axis Touch / Non-Touch Sensor - Optional for Purchase
Materials Supported	EN Steel - Untreated, Aluminium, Copper, Brass, Bronze, Zinc, Magnesium, Lead, Gold, Silver, Platinum, Plastics, Copper-Tungsten, Epoxy, Graphite, ABS, Polycarbonate, Acrylic, composites, carbon fiber, fiber glass, aramid, Wood, MDF, PCB etc.
Calibrated By	All of our measurements are made with Mitutoyo calibrated instruments
Diode Laser Compatibility	Yes - With Arduino Controller option Only
Power Input	Single Phase Input – 220V / 110V
Current Requirement	16 Amp Plug Point Required
Bellow Implementation	Optional - Reduces Working Area by 12-15%
Mild Steel Table	Optional

CAM Support	Fully compliant with GCODE / MCODE (GRBL) - Solidworks, Catia, Fusion etc.
Control PC	Desktop PC with 22 Inch Full HD Monitor, Keyboard & Mouse - LinuxCNC Preinstalled
Software Provided	LinuxCNC
Cooling System	Air Cooled Spindle. Mist Cooling with Flex Pipe Installed with an integrated solenoid valve controlled with the CNC Controller through GCODE

ZERO Chinese Parts



CarbonCut 1290

3 AXIS CNC

Highlights

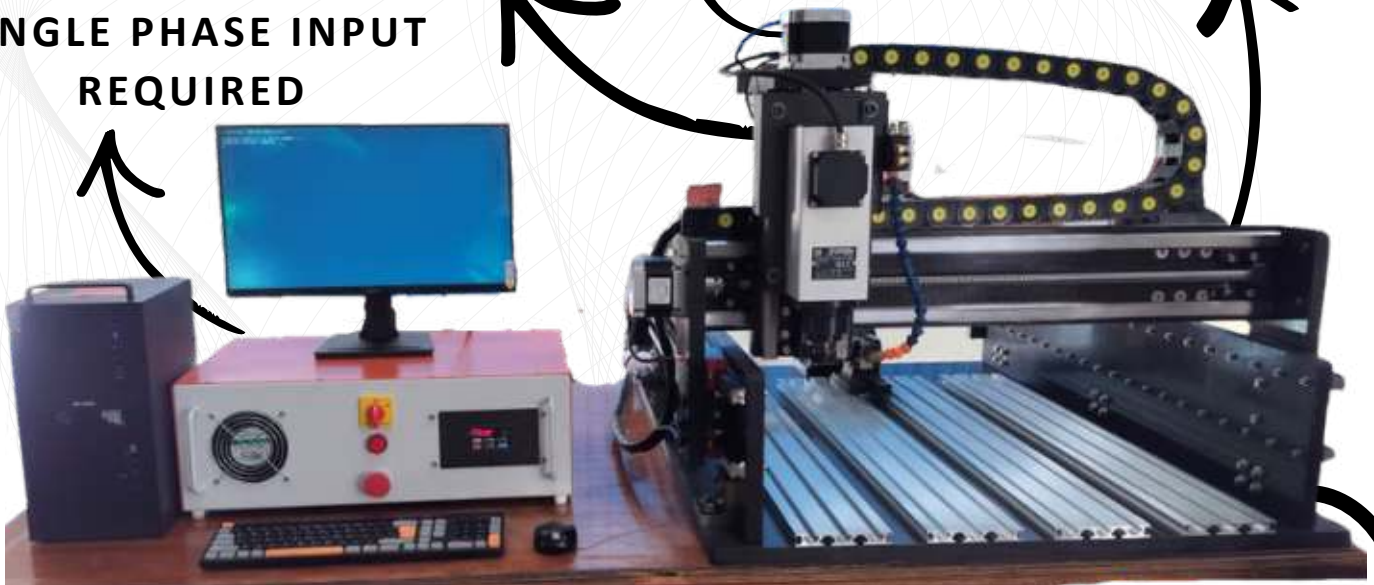


**ALL AXES
TAMAGAWA
NEMA 34 STEPPERS
MADE IN JAPAN**

**24,000 RPM SPINDLE
TEKNOMOTOR, ITALY**

**HIWIN / THK
20MM BALL SCREW
25 MM LINEAR GUIDES
HA/CA GUIDE BLOCKS**

**SINGLE PHASE INPUT
REQUIRED**



MACHINE CONTROL

**MADE IN INDIA COMPONENTS -
CONTROLLER, DRIVERS, POWER
SUPPLY, VFD, SWITCHES, FAN,
ETC.**

**EXTRUDED
ALUMINIUM T SLOT
PROFILES**

**EMBEDDED
WATERBATH**

**LINUXCNC BASED
CONTROLLER
INCLUDES MONITOR KEYBOARD
AND MOUSE**

**PIONEERING COMPOSITE
SUPERSTRUCTURE WITH
LIFETIME WARRANTY**

OTHER CONTROLLER OPTIONS ALSO AVAILABLE

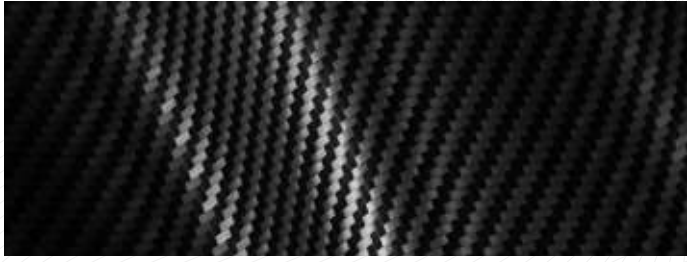
Embedded Waterbath

Addressing the CF & FG Machining Dust Challenge



- The integrated water bath on the machine's base plate enables you to submerge the material underwater prior to machining.
- This design prevents harmful dust from escaping into the environment and simplifies cleaning later on.
- You can keep the water in place for months, cleaning it only when necessary. Our superstructure material is resistant to rust and corrosion.
- Additionally, managing the sludge is straightforward, and it can be stored for disposal at a later time. No additional spend needed on heavy duty vacuum systems and safety equipment.

COMPATIBLE WITH



CARBON FIBER & FIBER GLASS



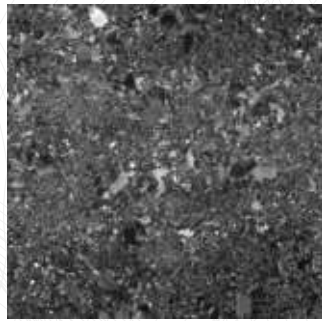
ALUMINIUM



EN 8 / 24 / 31 / 32 UNTREATED STEEL



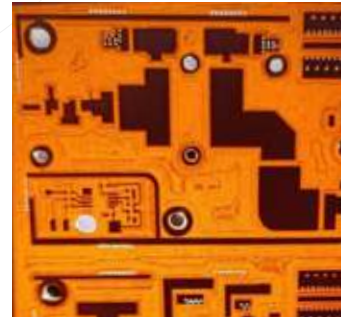
COPPER



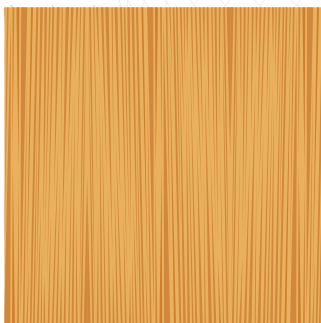
GRANITE



BRASS



PCB'S



Foam, ACP Sheet, Lead, Rubber, Silicone & other soft metals, materials & alloys.

ACCESSORIES INCLUDED WITH THE MACHINE

Cutting Bits

Milling Bits - 5 PCS,

---3MM Dia Endmill

---4MM Dia Endmill

---6MM Dia Endmill

Collets for Spindle

ER 16/20/25 Collet (Based on Spindle) - 3 PCS

---3MM Dia

---4MM Dia

---6MM Dia

Others

-- T Nuts (For Securing the Material) - 10 Pcs

-- Spanner Compatible with spindle Nut

-- Connector Cable - 1 Piece

-- Stock Mounting Bolts & Nuts - 8 Pcs

-- Composite Stock Holders - 4 Pcs

- Machine is shipped fully built in a plug & play condition
- Installation is not required - If requested additional costs will apply
- If shipped with a control pc, it is shipped fully configured in plug & play condition

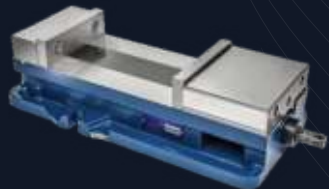
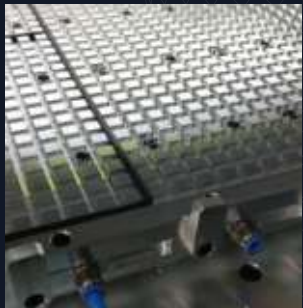
LASERS

Make Your Machine 2-in-1 Laser & Spindle



*with Arduino Controller Only

CLAMPING



**OPTIONS,
UPGRADES &
ACCESSORIES**

OTHER ACCESSORIES



Probes



Flood Cooling



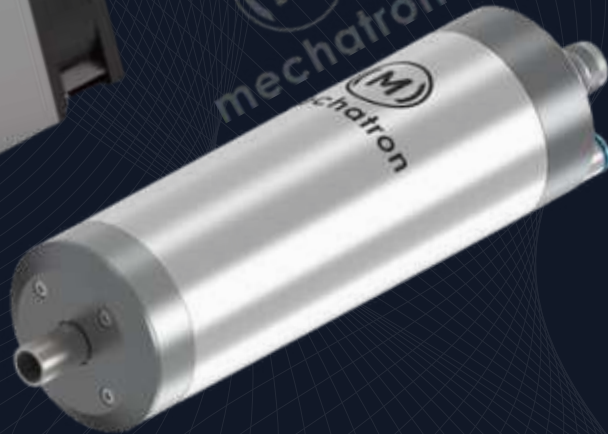
Bellows

SPINDLE OPTIONS



Rectangular - Air Cooled
 ER 11 / 16 / 20 / 25 / 32
 Runout - ~10 Microns
 6000 - 42000 RPM
 0.22 to 7 KW
 MTC / QTC

Teknomotor, Made in Italy



Round - Air / Water Cooled
 Runout - <5 Microns
 9000 - 60000 RPM
 ER 11 / 16 / 20
 0.8 to 8.5 KW
 MTC / QTC

Mechatron, Made in Germany



Flat Mounting - Air / Water Cooled
 Runout - <3 Microns *
 30,000 - 60,000 RPM
 ER 16 / 20 / 25
 1.5 to 5 KW
 MTC / QTC

Spingy, Made in Germany

ENCLOSURES

**OPTIONS,
 UPGRADES &
 ACCESSORIES**

& OTHERS

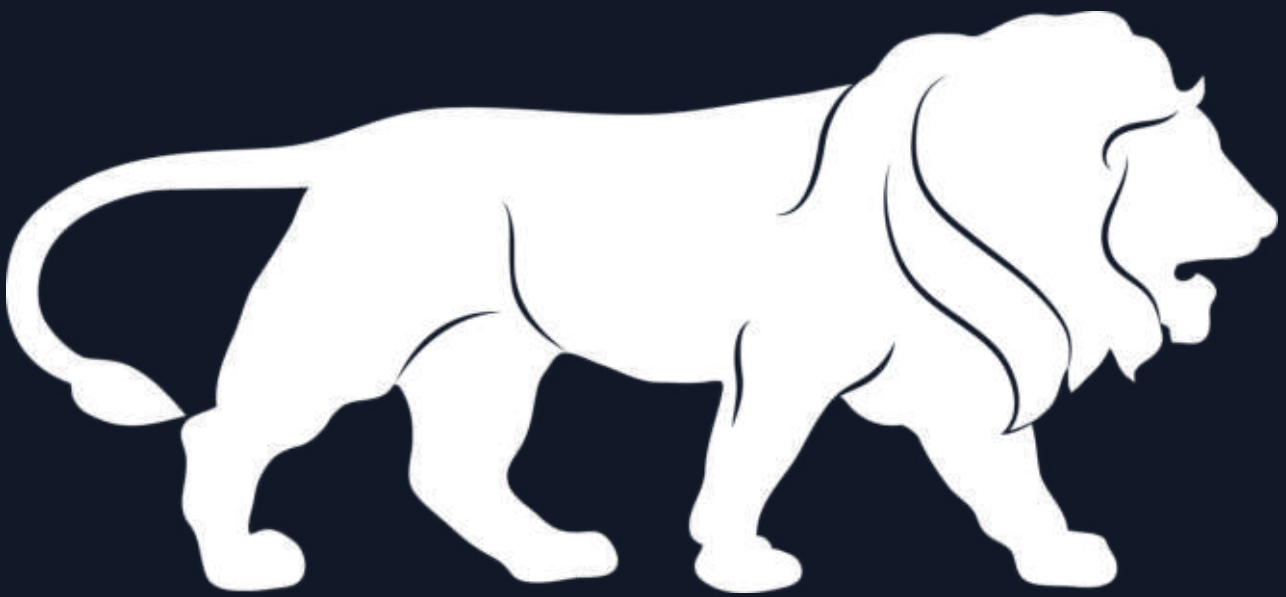
SERVOS



Made in USA | Comprehensive 3 Years Warranty



PROUDLY
MADE IN INDIA



ENGINEER BEAUTIFUL